



Anjuman-I-Islam's

AKBAR PEERBHOY COLLEGE OF COMMERCE & ECONOMIC STUDIES

NAAC Reaccredited College • Affiliated to University of Mumbai

Maulana Shaukatali Road, Do Taaki, Grant Road (E), Mumbai - 400008.

Tel.: Office: 23074122 Principal: 23083405

E-mail : apcce_college@yahoo.co.in Website : www.apccollege.in

Ref. No. _____

Date: 04.01.2024

SYJC Preliminary Examination
Time Table

Date	Day	Time	Subject
04-01-2024	Thursday	1.30 pm to 4.30 pm	① Secretarial Practice+ABT /Maths+Practical ①
05-01-2024	Friday	2.30 pm to 3.30 pm	① PT
06-01-2024	Saturday	1.30 pm to 4.30 pm	① English+Oral
08-01-2024	Monday	1.30 pm to 4.30 pm	① Hindi+Oral / Urdu+Oral ①
09-01-2024	Tuesday	1.30 pm to 4.30 pm	① Economics+ABT ①
10-01-2024	Wednesday	1.30 pm to 4.30 pm	① Book Keeping & Accountancy+ABT ①
11-01-2024	Thursday	1.30 pm to 4.30 pm	① Organization of Commerce+ABT ①

(Prof. Dr. Shaukat Ali)
Principal

(Mrs. Tanveer Khan)
Vice-Principal
Junior College

(Mrs. Aafreen Shaikh)
Supervisor
Junior College

S.Y.J.C (Prelims Exam)

Subject: **English** Marks: **80** Date : 6-01-2024 (Duration 3.00 hrs)

SECTION 1 : PROSE

(Reading for Comprehension , Language Study, Summary and Mind mapping)

Q.1- (A) Read the following extract and complete the activities given below: (12)

We travel, initially, to lose ourselves: and we travel next, to find ourselves. We travel to open our heart and eyes and learn more about the world than our newspaper, to those parts of the globe whose riches are differently dispersed. And we travel, in essence, to become young fools again to slow time down and get taken in and fall in love once more. The beauty of this whole process was best described, perhaps, before people even took to frequent flying, by George Santayana in his lapidary essay, " The Philosophy of Travel". We "need sometimes, the Harvard philosopher wrote," to escape into open solitudes, into aimlessness, into the moral holiday of running some pure hazard, in order to sharpen the edge of life to taste hardship, and be compelled to work desperately for a moment at no matter what."

Few of us ever forget the connection between " travel" and travail", Travel in that sense guides us toward a better balance of wisdom and compassion of seeing the world clearly, and yet feeling it truly. For seeing without feeling can obviously be uncaring : while feeling without seeing can be blind. Yet for me the first great joy of travelling is simply the luxury of leaving all my beliefs and certainties at home, and seeing everything I thought I knew in a different light, and from a crooked angle.

Though it's fashionable nowadays to draw a distinction between the " tourist" and the " traveler" (perhaps the real distinction lies between those who leave their assumptions at home, and those who don't. Among those who don't a tourist is just someone who complains, " Nothing here is the way it is at home," while a traveler is one who grumbles, " Everything here is the same as it is in Cairo-or Cuzco or Kathmandu." It's all very much the same.

But for the rest of us, the sovereign freedom of travelling comes from the fact that it whirls you around and turns you upside down, and stands everything you look for granted on its head. if a diploma can famously be a passport(to a journey through hard realism), a passport can be a diploma(for a crash course in cultural relativism) And the first lesson we learn on the road, Whether we like it or not, is how provisional and provincial are the things we imagine to be universal.

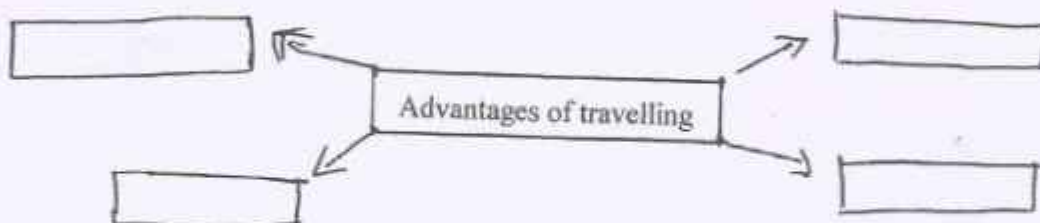
A-1 Read the following sentences and state whether they are true or false : (2)

- * According to the author people travel because they don't know what to do with their time.
- * Travel makes us more compassionate towards the world.
- * We travel to slow down time
- * A diploma certificate can be used a passport

A-2 Complete the web on the advantages of travelling.

~~Advantages of travelling~~

(2)



A.3- Give reasons:

(2)

We travel to open our hearts and eyes and learn more about the world than our newspapers accommodate. explain in not more than 50 words.

A.4- Personal Response :-

(2)

Write in about 50 words about your visit to an interesting place.

A.5 Do as Directed :

(2)

- i) We travel to lose ourselves. (Replace the infinitive with a gerund and rewrite)
- ii) Travel guides us to a better balance of beauty and compassion. (Rewrite the sentence using "not only ... but also")

A.6- Vocabulary

(2)

Find a word from the extract which means the following :

- i) Basic or most important quality of something
- ii) A danger or risk

B.1 Non-Textual Grammar:

(3)

Do as directed :

- i) We can accept our life gracefully. (Rewrite using modal auxiliary showing "Compulsion")
- ii) Japanese toys are more educational than Indian toys. (Change the degree of comparison)
- iii) The husband said to his wife, " Will you pardon me for bringing you to England?" (Rewrite the sentence in indirect speech)

B.2- Spot the error in the given sentence and rewrite

(1)

1) I entered the room for search the document.

Q.2- (A) . Read the extract and complete the activities given below :

(12)

World peace-keeping is one of the fundamental human responsibilities. All countries and continents around the world should refrain from any kind of warfare with neighboring or any other country and maintain good and friendly relations with each other.

Each year the International Day of Peace is observed around the world on September 21. The UN General Assembly has declared this as a day devoted to strengthening the ideals of peace, through observing 24 hours of non-violence and cease-fire .

But achieving true peace entails much more than laying down arms. It requires the building of societies where all members feel that they can flourish. It involves creating a world in which people are treated equally, regardless of their race, class or creed.

When we hear about war, we think of something really far away and movie like. but war is real and has many many consequences: people lose their belongings, their families, their lives and everything they know of. Those that survive have to choose between living in fear and suffering because they are surrounded by violence, or have abandoned everything they know, even their families, and risk everything so they can hopefully move to another country.

The recent ongoing Russia-Ukraine war is an example of such political tension between the cross-border nations. As a result of which, many innocent lives are in danger or have even ended. Today, the entire world is divided into two groups- one group of nations supporting Ukraine and the other group supporting Russia. In this way, an unofficial global war has already started which is causing heavy economic loss to people worldwide, directly or indirectly. The cost of petroleum and cooking gas has alarmingly become high. This is adversely affecting the common people of society. Thus it is always better to maintain global peace because war gives nothing to anyone anywhere.

A.1- Select and write down two sentences that accurately depict the main ideas from the extract : (2)

- * World peace is necessary for mankind and society to flourish
- * World peace is a dream that mankind can never achieve.
- * Conflicts between any nation or groups cause repercussions all over the world.
- * Common man is least affected by conflicts.

A2- Write down in not more than 50 words the impact a conflict or war has on common people. (2)

A.3- Achieving true peace involves much more than laying down arms' This statement from the extract implies that. (Write in about 50 words) (2)

A4- "An eye for an eye makes the whole world blind". Write down your opinion on this statement in not more than 50 words. (2)

A5- Language study:

* All Countries should refrain from any kind of warfare. (Use a modal auxiliary showing certainty and rewrite the sentences) (2)

* The entire world is divided into two groups by war (Change the voice)

A6- Vocabulary:- (2)

Find a word from the extract which means:

Basic and essential

to stop fighting

Q.2- B- Summary Writing- (3)

Write a summary of the above extract with a suitable title with the help of the points given below;
(Global peace fundamental responsibility- refrain from war-impact of war -need for peace)

Q.2- C Mind Mapping-

Develop a mind map frame/design on the topic "Benefits of reading" expressing and presenting your c

Q.3- A Read the following extract and complete the activities given below.

When I had money, Money, O!
I knew no joy till I went poor:
For many a false man as a friend
Came knocking all day at my door.
Then felt I like a child that holds
A trumpet that he must not blow
because a man is dead: I dared
Not Speak to let this false world know.
Much have I thought of life, and seen
How poor men's hearts are ever light:
And how their wives do hum like bees
About their work from morn till night
So, when I hear these poor ones laugh,
And see the rich ones coldly frown
poor men, think I, need not go up
So much as rich men should come down
When I had money , Money, O!
My many friends proved all untrue:
But now I have no money, O!
My friends are real , though very few.

A.1- State whether the following statements are true or False :

(2)

- a) The speaker had many false friends when he had money.
- b) The speaker compares his situation to a child that holds a book and cannot read.
- c) The speaker says that poor men and their wives are very happy at heart.
- d) According to the speaker the poor men need to come up to the level of the rich men.

A.2- The speaker says that he has genuine friends now though he has no money. State the reason for these statements in not more than 50 words.

(2)

A.3- Money is not at all important for human happiness. Write down your opinion on his statement in not more than 50 words.

(2)

A.4- Name and explain the figures of speech in the following lines:

(2)

- a) When I had money, money O!
- b) Poor men, think I, need not go up.

A.5- Compose two poetic lines in continuation to the following lines :

(2)

When I had money, Money, O!

I knew no joy till I went poor:



Q.3- B- Appreciation :-

(4)

Write a poetic appreciation of the extract given below:

Weavers, Weaving at break of day,
Why do you weave a garment so gay?
Blue as the wing of a halcyon wild,
We weave the robes of a new-born child.
Weavers, weaving at fall of night,
Why do you weave a garment so bright?
Like the plumes of a peacock, purple and green,
We weave the marriage-veils of a queen.
Weavers, Weaving solemn and still,
What do you weave in the moonlight chill....
White as a feather and white as a cloud,
We weave a dead man's funeral shroud.

SECTION III

WRITING SKILLS

Q.4- Complete the activities as per the instruction given below:

(16)

Attempt any ONE of the following activities.

A- Drafting virtual Message

(4)

Read the given conversation between Ryan and Mrs. Pinto

Ryan : Hello, May I speak to Mr. Pinto ?

Mrs. Pinto: He has gone to the hospital to attend the OPD. May I know who is speaking?

Ryan : Yes, I am Ryan D'Souza, My wife has been having a severe headache since yesterday. Since This morning she has also developed high temperature. I would be very grateful if the doctor could come to our place to examine her.

Mrs. pinto : Of Course, Please Let me note down your address.

Ryan : It is B-49, Star Arcade, New Colony, Delhi.

Mrs . Pinto : I will give him your message as soon as he returns

Ryan : Thank you.

Mrs. Pinto had to leave for the school where she teaches. So she wrote a message for her husband. Write the message in not more than 50 words.

OR

Statement of Purpose

(5)

You must have decided your aim in life and the university you would like to join for your programme. Write a statement of purpose as part of your application to the University.

OR

Group Discussion

Rohit, John, Glory, Mary have participated in a group discussion. The topic given to them is " Deforestation Construction of Roads' You may use the following points:

- Climate Change
- Replacement of cut trees
- Man's greed never ending
- Loss of fauna

B- Attempt any ONE of the following activities

E-MAIL

Write an e-mail to the Commissioner of Municipal Corporation of your city complaining about irregular supply of water in your locality. (4)

OR

Report Writing

Write a news report on the following headline with a dateline, Lead/intro paragraph and short continuing paragraph.

- * City college organizes Bird exhibition.

OR

Interview

* Your college has invited a dietitian on the occasion of ' World Health Day' Imagine you are the editor of your College magazine, conducting an interview of the dietitian. Frame a set of 8 to 10 questions.

C- * Attempt any ONE of the Following.

Preparing A speech

* You wish to take part in an elocution contest organized by the Rotary Club of your town. One of the Topics is " Save water, Save life." (4)

Prepare a speech on this topic in about 100 words. Use the following Points:

- * Use of water
- * Problems of drought
- * Solution to the problems.

OR

Compering

* Imagine that you are a compere of the " Annual Prize distribution Ceremony" in your college. Write a script for the same. You can take the help of the following points: (4)

- * Introduction- A brief introduction of the programme.
- * welcome Speech- Welcome of all the guests; felicitation of the guests (Principal, Vice-principal etc.)
- * Lighting the lamp
- * Speech by the Chief Guest

6

- * Main Events
- * Vote of Thanks

OR

Expansion of Ideas

- * Expand the Idea inherent in the following proverbs/quotation:
- * Manners Maketh a man

D- Attempt any One of the following

(4)

Review

* Write a review of a book you have recently read. You may use the points given below.

- Importance of the title
- Plot analysis
- Characters and characterisation
- Central idea or theme
- Special features

OR

Blog Writing.

- Write a blog on 'Cleanliness' in the proper format with the help of the following points
- Dirty surroundings
- Laziness of public
- Solutions

OR

Appeals

(4)

* Prepare an appeal to make the general public aware of the need for "Eye Donation" Make use of the following points:

- * Prepare an attractive slogan
- * Make a persuasive appeal
- * Mention the importance of eye donation
- * add your own ideas

SECTION III: DRAMA

Q.5- A Complete the following activities as per the instruction given

(4)

1- Match the columns

(2)

Column A	Column B
Epistolary	Supernatural and haunted buildings
Gothic	Adventures of a rogue protagonist
Allegorical	Narrated through a series of documents
Picaresque	Story bears more than one level of symbolic meaning

LIB

2- Pick the odd one out :

- 1- Mary Shelly, Ann Radcliffe, Daniel foe, Agatha Christie
- 2- E.M. Forster, James Joyce, Joseph Conrad, John Bunyan
- 3- Anita Desai, Nayantara Sehgal, Arun Joshi, Charles Dickens
- 4- Historical, Autobiographical, Bildungsroman, Emotional

(2)

Q.5- B. Answer the following question in about 50 words:

(4)

1- To Sir, With Love is an autobiographical novel. Justify this statement.

(2)

2- The narrator in the novel " To Sir, With Love" says that Miss Euphemia Phillips Proved to be the coolest and best informed at the half yearly report presentation. Explain.

(2)

Q.5- C. Answer the following questions in about 50 words:

(4)

1- In the novel " Around the World in Eighty Days" Passepartout is indeed a loyal friend to Phileas fogg. Comment on this Statement.

(2)

2- Describe the character of Detective Fix.

(2)

Q.5- D. Answer the following questions in about 50 words:

(4)

1- Describe the character of " Mary Morsten" from the point of view of Sherlock Holmes.

(2)

2- Write down about the central idea of the novel " The Sign of Four" in not more than 50 words.

(2)

8

S.Y.J.C.
 Time: 180 mins.

Mathematics & Statistics (88)

Max. Marks 80
 Date: 04 / 01 / 2024

General Instruction:

- 1) All questions are compulsory
- 2) There are 6 questions divided into two sections.
- 3) Write answer of Section I & Section II in the same answer book.
- 4) Use of algorithmic table is allowed. Use of calculator is not allowed
- 5) For L.P.P. graph paper is not necessary. Only rough sketch of graph is expected.
- 6) Start answer of each question on a new page.
- 7) For each multiple choice type question, it is mandatory to write the correct answer along with its alphabetical letter eg. (a)..... / (b)..... / (c)..... / (d)..... NO mark(s) shall be given if "ONLY" the correct answer or the alphabet of the correct answer is written. Only the first attempt will be considered for evaluation.

SECTION - I

Q.1 A) Select and write the correct answer of the following multiple choice of questions (1 mark each)

6

- i) The dual statement of the statement $(p \vee q) \wedge (r \vee s)$
 - a) $(p \wedge q) \wedge (r \wedge s)$
 - b) $(p \wedge q) \vee (r \wedge s)$
 - c) $(p \vee q) \vee (r \vee s)$
 - d) $(r \vee s) \wedge (p \vee q)$
- ii) $\int \sqrt{1+x} dx =$ _____
 - a) $\frac{x}{2}\sqrt{1+x} + c$
 - b) $\frac{2}{3}[1+x]^{\frac{3}{2}} + c$
 - c) $\frac{2}{\sqrt{1+x}} + c$
 - d) $-\frac{3}{2}[1+x]^{\frac{2}{3}} + c$
- iii) The negation of the proposition "If 2 is prime, then 3 is odd", is
 - a) If 2 is not prime, then 3 is not odd.
 - b) 2 is prime and 3 is not odd.
 - c) 2 is not prime and 3 is odd.
 - d) If 2 is not prime, then 3 is odd
- iv) The order and degree of the differential equation $\left[1 + \left(\frac{dy}{dx}\right)^2\right]^{\frac{2}{3}} = 8 \left(\frac{d^2y}{dx^2}\right)$ are respectively
 - (a) 3, 1
 - (b) 1, 3
 - (c) 3, 3
 - (d) 1, 1
- v) The area of the region bounded by the curve $y = x^2, x = 0, x = 3$ and X-axis is _____.
 - (a) 9 sq. units
 - (b) $\frac{26}{3}$ sq. units
 - (c) $\frac{52}{3}$ sq. units
 - (d) 18 sq. units
- Solution of the equation $x \frac{dy}{dx} = y$ is
 - (a) $y = ae^x$
 - (b) $y = be^{2x}$
 - (c) $y = be^{-2x}$
 - (d) $y = e^{ax}$

B) State whether each of the following statements are True or False (1 mark each)

- i) If $f'(x) > 0$ for all $x \in (a, b)$, then $f(x)$ is decreasing function in the interval (a, b) .
- ii) If $f(x) = k$, where k is a constant, then $\int k dx = 0$.
- iii) If A and B are conformable for the product AB then $(AB)^T = A^T B^T$

3

C) Fill in the following blanks (1 mark each)

- i) If $p \vee q$ is true, then the truth value of $\sim p \wedge \sim q$ is _____
- ii) If $\int \frac{x}{(x+2)(x+3)} dx = \frac{\quad}{\quad} + \frac{3}{(x+3)} dx$
- iii) Matrix $B = \begin{bmatrix} 0 & 3 & 1 \\ -3 & 0 & -4 \\ p & 4 & 0 \end{bmatrix}$ is skew symmetric then value of p is _____.

Q.2 A) Attempt any TWO of the following (3 marks each)

- i) Write the converse, inverse and contrapositive of the statement, "If $2 + 5 = 10$, then $4 + 10 = 20$." 3
- ii) $x^5 \cdot y^7 = (x + y)^{12}$ then show that $\frac{dy}{dx} = \frac{y}{x}$
- iii) Evaluate: $\int \frac{1}{7+6x-x^2} dx$

B) Attempt any TWO of the following (4 marks each)

- i) Using the truth table, examine whether the following statement patterns are tautology, contradictions or contingency. $[(\sim p \wedge q) \wedge (q \wedge r)] \wedge (\sim q)$ 6
- ii) Solve the following equations by reduction method:
 $x + 2y + z = 8$, $2x + 3y - z = 11$, $3x - y - 2z = 5$
- iii) For manufacturing x units, labour cost is $150 - 54x$ and processing cost is x^2 . Price of each unit is $p = 10800 - 4x^2$. Find the values of x for which.
i) Total cost is decreasing ii) Revenue is increasing

Q.3 A) Attempt any TWO of the following (3 marks each)

- i) Find x , y and z , if $\left\{ 5 \begin{bmatrix} 0 & 1 \\ 1 & 0 \\ 1 & 1 \end{bmatrix} - \begin{bmatrix} 2 & 1 \\ 3 & -2 \\ 1 & 3 \end{bmatrix} \right\} \begin{bmatrix} 2 \\ 1 \end{bmatrix} = \begin{bmatrix} x+1 \\ y-1 \\ 3z \end{bmatrix}$
- ii) A rod of 108 meters long is bent to form rectangle. Find its dimensions if the area of rectangle is maximum.
- iii) Evaluate: $\int x^3 \cdot \log x dx$

B) Attempt any ONE of the following (4 marks each)

- i) Find the particular solution of the differential equation $(x - y^2x)dx - (y + x^2y)dy = 0$, when $x = 2, y = 0$ 6
- ii) Find the inverse of the matrix A by using adjoint method,
where $A = \begin{bmatrix} -3 & -1 & 1 \\ 0 & 0 & 1 \\ -15 & 6 & -6 \end{bmatrix}$
- iii) Evaluate $\int_1^3 \log x dx$. 4

C) Attempt any ONE of the following questions (Activity)

- i) Complete the following activity to find MPC, MPS, APC and APS, if the expenditure E_c of a person with income I is given as:

$$E_c = (0.0003) I^2 + (0.075) I$$

when $I = 1000$

Solution: Given $E_c = (0.0003) I^2 + (0.075) I$
we have $APC = \frac{E_c}{I}$ 4

At $I = 1000$, $APC = \underline{\hspace{2cm}}$

Now, $MPC = \frac{d(E_x)}{d_I}$

At I = 1000, MPC = _____

At I = 1000, MPS = _____

At I = 1000, APS = _____

- ii) In a certain culture of bacteria, the rate of increase is proportional to the number present. If it is found that the number doubles in 4 hours, complete the following activity to find the number of times the bacteria are increased in 12 hours.

Solution: Let N be the number of bacteria present at time t.

Since the rate of increase is proportional to the number present.

$\therefore \frac{dN}{dt} = K \text{ _____};$ where K is the constant of proportionality.

Integrating on both sides, we get

$\log N = K \text{ _____} + C \dots \dots \dots (I)$

- (i) If t = 0 then N = N₀
 from equation (I);
 $\log N_0 = 0 + C$
 $\therefore C = \log N_0$

- (ii) If t = 4 hours then N = 2 N₀; from equation (I);
 K = _____

- (iii) When t = 12 hours
 N = _____ N₀

SECTION - II

Q.4 A) Select and write the correct answer of the following multiple choice of questions (1 mark each)

- i) The difference between face value and present worth is called _____.
 (a) Banker's discount (b) True discount (c) Banker's gain (d) Cash value
- ii) b_{yx} is
 (a) regression coefficient of y on x (b) regression coefficient of x on y
 (c) correlation coefficient between x & y (d) covariance between x and y
- iii) _____ is a series of cash flows over a limited period of time.
 (a) Policy value (b) Annuity (c) Present value (d) Future value
- iv) Quantity index number by weighted aggregate method is given by
 (a) $\sum \frac{q_1w}{p_0w} \times 100$ (b) $\sum \frac{q_0w}{q_1w} \times 100$ (c) $\frac{\sum p_1w}{\sum q_0w} \times 100$ (d) $\frac{\sum p_0w}{\sum p_1w} \times 100$
- v) If the corner points of the feasible region are (0,0), (3,0), (2,1) and 0, 7/3) then maximum value of $Z = 4x + 5y$
 (a) 12 (b) 13 (c) $\frac{35}{3}$ (d) 0
- vi) The complicated but efficient method of measuring trend of time series is
 (a) graphical method (b) method of moving average
 (c) method of least square (d) method of addition

B) State whether each of the following statements are True or False (1 mark each)

- i) The banker's discount also called true discount.
- ii) Laspeyre's Price Index Number uses current year's quantities as weights.
- iii) To convert maximization type assignment problem into a minimization problem, the smallest element in the matrix is deducted from all elements of matrix.

C Fill in the following blanks (1 mark each)

- i) A wholeseller allows 25% trade discount and 5% cash discount. The net price of an article marked at 1,600 is _____.
- ii) Walsch's Price Index Number is given by _____
- iii) Graphical solution set of the inequations $x \geq 0$ and $y \leq 0$ lies in _____ quadrants

Q.5 A Attempt any TWO of the following question (3 marks each)

- i) For a bivariate data:
 $\sum(x - \bar{x})^2 = 1200$, $\sum(y - \bar{y})^2 = 300$, $\sum(x_i - \bar{x})(y_i - \bar{y}) = -250$,
Find : (a) b_{yx} (b) b_{xy} (c) correlation coefficient between x and y

- ii) The following table shows gross capital information (in Crore) for years 1966 to 1975

Years	1966	1967	1968	1969	1970
Goss capital information	20	25	25	30	35
Years	1971	1972	1973	1974	1975
Goss capital information	30	45	40	55	65

- iii) Obtain trend values using 5-yearly moving averages.
An agent places insurance for ₹4,00,000 on life of a person. The premium is to be paid annually at the rate of ₹35 per thousand per annum. Find the agent's commission at 15% on the premium.

B Attempt any TWO of the following questions: (4 marks each)

- i) Solve the following L.P.P. by graphically method:

Maximize $z = 4x + 6y$
Subject to $3x + 2y \leq 12$,
 $x + y \geq 4$,
 $x \geq 0, y \geq 0$.

- ii) A marketing manager has list of salesmen and territories. Considering the travelling cost of the salesmen and the nature of territory, the marketing manager estimate the total cost per month (in ₹thousand) for each salesmen in each territory. Suppose the amounts are as follows:

Salesmen	Territories				
	I	II	III	IV	V
P	11	16	18	15	15
Q	7	19	11	13	17
R	9	6	14	14	7
S	13	12	17	11	13

Find the assignment of salesman to territories that result in minimum cost.

- iii) The probability distribution of a discrete r.v. X is as follows:

X	1	2	3	4	5	6
$P(X=x)$	K	$2K$	$3K$	$4K$	$5K$	$6K$

- (a) Determine the value of k . (b) Find $P(X \leq 4)$ (c) $P(2 < X < 4)$

Q.6

A

Attempt any TWO of the following questions (3 marks each)

- i) An agent was paid ₹88,000 as commission on the sales of computers at the rate of 12.5%. If the price of each computer was ₹32,000 how many computer did he sell?
- ii) The publisher of a magazine wants to determine the rate of increase per of subscribers. The following table shows the subscription information for eight consecutive years:

Years	1976	1977	1978	1979	1980	1981	1982	1983
No of subscribers (in millions)	12	11	19	17	19	18	20	23

Fit a trend line by graphical method.

- iii) If x follows Poisson distribution such that $P(x=1) = 0.4$ and $P(x=2) = 0.2$, find the variance of x .

B

Attempt any ONE of the following (4 marks each)

- i) From the following data, find the regression equation of y on x and estimate y when $x = 4$:

X	1	2	3
Y	2	1	6

- ii) Calculate the cost of living index number for the following data by aggregative expenditure method:

Group	Base Year		Current Year
	Price	Quantity	Price
Food	120	15	170
Clothing	150	20	190
Fuel & lighting	130	30	220
House rent	160	10	180
Miscellaneous	200	11	220

C Attempt any ONE of the following questions (Activity):

- i) An examination consists of 5 multiple choice questions, in each of which the candidate has to decide which one of 4 suggested answers is correct. A completely unprepared student guesses each answer completely randomly. Complete the following activity to find the probability that,

- (a) the student gets 4 or more correct answers.
 (b) the student gets less than 4 correct answer.

Solution: Let X = No. of correct answers
 P = Probability of guessing a correct answer

$$\therefore p = \frac{1}{4}, q = \frac{3}{4}$$

Here $n = 5$

$$\therefore X \sim B(n, p)$$

For binomial distribution,

$$p(x) = {}^n C_x p^x q^{n-x}$$

- (a) Probability that the student gets 4 or more correct answers -
 $= P(X \geq 4)$
 $= P(X = 4) + P(X = 5)$
 $=$ _____

- (b) Probability that the student gets less than 4 correct answers -
 $= P(X < 4)$
 $= 1 - P(X \geq 4)$
 $= \underline{\hspace{2cm}}$

4

- ii) Following table shows the amount of sugar production (in lakh tonnes) for the year 1931 to 1941:

Year	Production	Year	Production
1931	1	1937	8
1932	0	1938	6
1933	1	1939	5
1934	2	1940	1
1934	2	1940	1
1935	3	1941	4
1936	2		

Complete the following activity to fit a trend line by method of least squares:

Solution: Let y_t be the trend line represented by the equation $y_t = a + bt$

4

Let $u = \frac{t - \text{mid value}}{h}$,

mid value = 1936 and $h = 1$

Year (t)	y_t	u	u^2	uy_t
1931	1	-5	25	-5
1932	0	-4	15	0
1933	1	-3	9	-3
1934	2	-2	4	-4
1935	3	-1	1	-3
1936	2	0	0	0
1937	8	1	1	8
1938	6	2	4	12
1939	5	3	9	15
1940	1	4	16	4
1941	4	5	25	20
	$\sum y_t = 33$	$\sum u = 0$	$\sum u^2 = 110$	—

The equation of the trend line becomes,

$y_t = a_1 + b_1 u \dots \dots \dots (1)$

Two normal equations are,

$\sum y_t = na_1 + b_1 \sum u \dots \dots \dots (2)$

$\sum uy_t = a_1 \sum u + b_1 \sum u^2 \dots \dots \dots (3)$

From equation (2), we get

$a_1 = \underline{\hspace{2cm}}$

From equation (3), we get

$b_1 = \underline{\hspace{2cm}}$

The equation of trend line is given by

$y_t = \underline{\hspace{2cm}}$

Handwritten signature and date: 11 Jan 24

S.Y.J.C (Preliminary Exam)

Subject: Secretarial Practice Marks: 80 Date :04-01-2024 (Duration 3.00 hrs)

Q.1- (A) Select the correct answer from the option given below and rewrite the statements. (5)

1- A Stock Exchange is where stock brokers and traders can buy and sell _____

- a) gold b) securities c) goods

2- Dividend is paid first to shareholders _____

- a) Equity b) Preference c) Deferred

3- Company has to appoint _____ to protect the interest of depositors.

- a) Debentures Trustees b) Deposit Trustees c) Credit Rating Agency

4- The _____ have the power to allot shares

- a) Director b) Board of Directors c) Company Secretary

5- Dividend is cannot be declared out of _____

- a) Capital b) Profit c) Reserves

B- Match the pairs (5)

Group A		Group B	
1	Debenture Trustees	a	New issue market
2	Depositors	b	Investment decision
3	Primary Market	c	Agreement
4	Capital budgeting	d	Creditors
5	Bonus Shares	e	Protect the interest of Debentures holders
		f	Protect the interest of shareholders
		g	Capitalisation of Profit

C- True or False (5)

- 1- Company has to create a charge on its assets when it issues secured debentures.
- 2- Equity shareholders enjoy fixed rate of dividend.
- 3- Equity shareholders enjoy ownership of a company.
- 4- Finance is related to money and money management.
- 5- A broker is a dealer in stock exchange who carries on trading of securities in his own name.

D- Write a word or term or a phrase which can substitute for the statement

- 1- A specific place where trading of securities is arranged in an organized method.
- 2- Credit extended by the suppliers with an intention to increase their sales.
- 3- Transfer of shares due to operation of Law.
- 4- Authority which has power to issue debentures.
- 5- The Shareholders to whom the bonus shares are issued.

Q.2- Explain the following terms/concepts (any 4)

- 1- Forfeiture of shares
- 2- Private Placement
- 3- Redemption of debentures
- 4- Overdraft
- 5- Commercial bills
- 6- Broker

Q.3- Study the following case/situation and express opinion (any three)

1- The Balance-sheet of a Donald Company for the year 2018-19 reveals equity share capital of Rs.25,00,000 and retained earnings of Rs. 50,00,000

- a) Is the company financially sound?
- b) Can the retained earnings be converted into capital?
- c) What type of source retained earning is ?

2- DDS financial plans to raise Rs.10 crores by issuing secured, Non-convertible debentures. However, as per the Articles of Association, the board of directors have authority only to raise upto 5 crores. They are also considering whether to go for private placement or make public offer. Please advise them on the following-

- a- What can be the maximum tenure of the debentures to be issued?
- b-Is the proposed issue within the borrowing power of the board?
- c- Within what period should company issue Debenture certificate?

3- Joy Ltd. Company is a newly incorporated company . It wants to raise capital for the first time by issuing equity shares.

- a- Should it go to primary market or secondary market to issue its shares?
- b- Should it offer its shares through public offer or rights issue?
- c-What will be the issue of Equity shares by Joy Ltd. Co. Called as, IPO or FPO?

4- Mr. Rohit an individual investor, invests his own funds in the securities. He depends on investment income and does not want to take any risk. He is interested in definite rate of income and safety of Principal.

- a- Name the type of security that Mr. Rohit will opt for.
- b-what does he receive as return on his investment?
- c-The return on investment which he receives is fixed or fluctuating ?

Q.4- Distinguish between (any 3)

(12)

- 1- Initial public offer and further public offer.
- 2- Share and debentures.
- 3-Fixed capital and working capital.
- 4- Right shares and Bonus shares.
- 5- Interim Dividend and Final Dividend.

Q.5- Justify the following statements (any two)

(8)

- 1- Equity shareholders are real owners and controllers of company.
- 2- A private company can collect deposits from public.
- 3- Dividend is paid out of profit of the company.
- 4- Equity share capital is risk capital.

Q.6- Attempt the following (any 2)

(10)

- 1- Draft a letter to debenture holders informing him about redemption of debenture.
- 2- Write a letter to the shareholder regarding issue of bonus shares.
- 3- Draft a letter of thanks to the depositor of a company.

Q.7- Answer in brief (any 2)

(8)

- 1- Explain any four advantages of Depository system to investor.
- 2- State the content of shares certificate.
- 3- State the features of Bonds.

Q.8- Define Preference shares what are the different types of preference shares

(8)

OR

Define Debenture what are the different types of Debentures

Application Based Test

Subject: Secretarial Practice Marks: 20 Date : 4-1-2024 (Duration : 1.00 hrs)

Name of Students : _____ Roll No _____ Div _____

Q.1- Correct the underlined word and rewrite the following sentences : (4)

1) Retained earnings is an external sources of finance

Ans : _____

2) Deposit is a long term source of capital

Ans : _____

3) Dividend must be paid within 60 days of its declaration.

Ans : _____

4) A Bear Expects the prices of shares to rise in future.

Ans : _____

Q.2- Complete the sentences. (4)

1) When applications received are more than the number of shares offered, it is called as _____

2) Secured debenture should be redeemed within _____

3) Dividend is recommended by _____

4) Central Government is a borrower in the Money Market trough the issue of _____

Q.3- Arrange in proper order. (3)

1- a) Dividend warrant Ans . (a) _____

b) Letter of payment of Dividend (b) _____

c) Issue of shares Certificate (c) _____

2- a) Share Certificate Ans. (a) _____

b) Special Resolution (b) _____

c) Letter of Conversion (c) _____

3- (a) Letter of Redemption Ans.(a) _____

b) Debenture Redemption form (b) _____

c) Redemption of Debentures (c) _____

Q.4- Study the following case/ situation and express your opinion. (any three out of four)

1- Ivana Co.ltd. Capital structure is made up of 10 Lakh equity shares having face value Rs. 10 each. The company has offered to the public 4 lakh equity shares and out of this , the public has subscribed for 3 Lakh equity shares.

a) How much is an authorized capital in terms of value?

Ans _____

b) How much is subscribed capital in terms of value ?

Ans _____

c) How much is issued capital in terms of value ?

Ans _____

2- The Board of Directors of Unix Co. ltd. which is a listed company recommends a dividend Rs.15 per share to be paid in cash.

a) Is it justified to pay the dividend first to its preference shareholders and then after to Equity shareholders ?

Ans _____

b) Is the AGM required to approve the same ?

Ans _____

c) Can the company pay dividend in cash ?

Ans _____

3- Mr. Raj is a bondholder of ABC Co. Ltd. Company has issued it for a period of 10 years.

a) What is the status of Mr. Raj in ABC Co Ltd?

Ans _____

b) What kind of return on investment in bonds, Mr. Raj will get?

Ans _____

c) Can company allot some shares to Mr.Raj on maturity date instead for repayment?

Ans _____

4- Angel Co. Ltd. issue Debenture worth Rs.5 Crores to the public for a period of 3 years.

a) Can debenture holders participate in the management of the company?

Ans _____

b) Can company repay debenture holders out of debenture Redemption Reserve (DRR) ?

Ans _____

c) When will company allot Debenture Certificate to the debenture holders ?

Ans _____

Anjuman-I-Islam's
Akbar Peerbhoy College of Commerce & Economics
M. S. Ali Road, Do Taaki Grant Road (E), Mumbai-400008

SYJC
5.01.2024

ANNUAL EXAMINATION 2023-24
HEALTH & PHYSICAL EDUCATION

1 hour
25marks

Q.1. Fill in the blanks.

(5 marks)

1. Circuit training consists of at least _____ exercises.
2. Obesity is the excessive of _____ in the body.
3. Yoga is generic term for a physical, _____, and spiritual discipline.
4. Filling of the lungs with air is _____.
5. _____ Organization has declared obesity as a disease and a disability.

Q.2. Match the columns.

(5 marks)

	Group "A"		Group "B"
1)	Diet for strength	A	Boxing
2)	Dhyan Chand Award	B	Life time contribution to sports development
3)	Dronacharya Award	C	Outstanding performance in sports & games
4)	Shiv Chhatrapati Award	D	Outstanding Coaches in sports & games
5)	Arjuna award	E	Whole mlk, banana, apricot, eggs, etc.
		F	Cash prize Rs3 lakh

Q.3. State the following statements are "TRUE" or "FALSE"

(5 marks)

1. The official height of the hurdles set to 3 feet for women.
2. The FIFA Football world cup 2022 is won by Argentina.
3. Heart rate can be measured using mobile fitness.
4. Relay is a team events with 4 runners running.
5. Triple jump is also known as hop, step jump.

Q. 4. Answer in one sentence.

(6 marks)

1. In which year was the first modern Olympics conducted?
2. What is the immediate source of energy for an athlete?
3. What is screen time?
4. What is the total number of nations that participate in the Commonwealth Games?
5. The 2018 inaugural Khelo India Youth Games was conducted in _____.
6. The first Asian games was held in the year _____.

Q.5. Answer the following.

(4 marks)

1. Explain the definition of health given by the World Health Organization.
2. What is doping? What are the side effects of doping?

X ——— X ——— X

CLASS :- SYJC

Examination : Preliminary 2024

Subject : Hindi

Marks : 80

Date : 8th January, 2024

Duration : 3 Hrs.

कृति १) (अ) निम्नलिखित गद्यांश पढ़कर सूचना के अनुसार कृतियाँ पूर्ण कीजिए :

(६)

वृद्धाश्रम के प्रबंधक का फोन कॉल सुनकर मैं अवाक रह गया। मौसी इस तरह अचानक संसार से चली जाएगी; इसका अनुमान नहीं था। ऑफिस से अनुमति लेकर तुरंत विदा हो गया। संग में पत्नी और चार सहकर्मी भी थे। मन बहुत दुखी हो रहा था- ओह ! भगवान भी कैसी-कैसी परिस्थितियों में लोगों को डालते रहते हैं।

गाड़ी में बैठे-बैठे मुझे उस दिन की याद हो आई जब मैं पहली बार वृद्धाश्रम में मौसी से मिलने आया था। पूछते-पूछते जब मैं वृद्धाश्रम पहुँचा था तो दिन डूबने को था। शहर से कुछ हटकर बना वृद्धाश्रम का साधारण-सा घर देखकर आश्चर्य लगा कि भारत सरकार के पूर्व वित्त सचिव की विधवा इस वृद्धाश्रम में किस प्रकार गुजारा कर रही होगी। संपूर्ण जीवन बड़ी-बड़ी कोठियाँ-बगलों में

रहने वाली मौसी अंतिम समय में शहर से दूर दस-बीस अनजान, बूढ़ी, अनाथ महिलाओं के साथ किस प्रकार रहती होगी। ऐसी जिंदगी की तो उसे कल्पना तक नहीं रही होगी, मैंने सोचा था।

सामने एक बोर्ड लगा था जिसपर अंग्रेजी में लिखा था "मातेश्वरी महिला वृद्धाश्रम"। दीवाल पर एक स्विच लगा हुआ दीखा। उसको दबाने से लगा कि अंदर कोई घंटी घनघना उठी। कुछ ही पलों के बाद फाटक का छोटा-सा भाग खिसकाकर एक व्यक्ति ने पूछा, "क्या बात है श्रीमान?"

"मुझे पिसेज गंगा मिश्र से मिलना है।" मैंने कहा।

"आपका नाम?"

"रघुनाथ चौधरी।"

"ठीक है। आप यहीं प्रतीक्षा कीजिए। मैं उनसे पूछ लेता हूँ कि वे आपसे मिलना चाहती हैं या नहीं।" यह कहकर उस व्यक्ति ने फाटक फिर से बंद कर लिया।

१. कृति पूर्ण कीजिए :

(२)

- मौसी का नाम →
मौसी से मिलने आए व्यक्ति का नाम →
वृद्धाश्रम का नाम →
गद्यांश में आई भाषा का नाम →

२. गद्यांश में आए अंग्रेजी शब्दों के हिंदी मानक अर्थ लिखिए :

(२)

- i) फोन
ii) कॉल
iii) स्विच
iv) मिसेज

३. 'वृद्धाश्रम की आवश्यकता' अपने शब्दों में स्पष्ट कीजिए।

(२)

(आ) निम्नलिखित गद्यांश पढ़कर सूचना के अनुसार कृतियाँ पूर्ण कीजिए :

(६)

स्थिति की गंभीरता को देखते हुए दुनिया के सभी देशों ने इस बारे में विचार करके समुचित कदम उठाने शुरू कर दिए हैं। 'ग्रीनहाउस' के प्रभाव के कारण आज धरती का तापमान निरंतर बढ़ रहा है। इसमें ओजोन विघटन की भी अहम भूमिका है। पराबैंगनी किरणें जब धरती तक आती हैं तो स्थलमंडल में मौजूद वस्तुओं द्वारा अवशोषित कर ली जाती हैं। ये वस्तुएँ पराबैंगनी के अवशोषण के बाद अवरक्त

विकिरण उत्सर्जित करती हैं। ये किरणें वापस वायुमंडल के बाहर नहीं जा पाती क्योंकि हवा में मौजूद कई गैसों उन्हें अवशोषित कर लेती हैं। इस तरह से धरती का तापमान बढ़ता है। तापमान बढ़ने से ध्रुवों पर जमी हुई विशाल बर्फ राशि के पिघलने के समाचार भी आ रहे हैं। यदि ऐसा होता रहा तो समुद्र का जलस्तर बढ़ेगा और तमाम तटीय क्षेत्र पानी में डूब सकते हैं। तापवृद्धि से जलवायु में जबर्दस्त बदलाव आ सकता है। मानसून में परिवर्तन के साथ कहीं अतिवृष्टि तो कहीं अकाल जैसी स्थिति आ सकती है। बीसे विगत एक सदी के दौरान भूमंडल में काफी परिवर्तन पाया गया है। हाल ही में शोध के बाद पाया गया कि हिमालय में गंगोत्री स्थित गोमुख हिमनद हर साल १८ मीटर पीछे की ओर खिसकता जा रहा है। अगर यही हाल रहा तो संभव है कि इक्कीसवीं सदी के प्रथमाध तक यही हिमनद तथा साथ

ही हिमालय के दूसरे हिमनद भी गलकर समाप्त हो जाएँ। ऐसे में उत्तर भारत में बहने वाली नदियों का अस्तित्व मिट जाएगा और मैदानों की उपजाऊ भूमि ऊसर में बदल जाने से कोई रोक नहीं सकेगा। अगर समय रहते स्थिति पर काबू नहीं पाया गया तो इसके गंभीर परिणामों से इनकार नहीं किया जा सकता। ओजोन विघटन के व्यापक दुष्प्रभावों के चलते इनसानी सभ्यता संकटापन्न है। अतः जरूरत है कि फौरन इससे निपटने के लिए समग्र कदम उठाए जाएँ अन्यथा कल तक तो शायद बहुत देर हो जाएगी।

('लोक विज्ञान : समकालीन रचनाएँ' संग्रह से)

१) लिखिए :

(२)

ओजोन विघटन का परिणाम :

- १.....
- २.....
- ३.....
- ४.....

२) दो-दो पर्यायवाची शब्द लिखिए :

(२)

- | | |
|--------------------|--------|
| १. धरती : १..... | २..... |
| २. समुद्र : १..... | २..... |

३) ग्रीन हाऊस गैसों के उत्सर्जन को कम करने के उपाय अपने शब्दों में लिखिए।

(२)

इ) निम्नलिखित प्रश्नों के उत्तर लगभग ८० से १०० शब्दों में लिखिए :

(६)

१. निराला जी की चारित्रिक विशेषताएँ लिखिए।
२. 'आदर्श बदला' कहानी के शीर्षक की सार्थकता स्पष्ट कीजिए।
३. 'सुनो किशोरी' पाठ के आधार पर अच्छी सहेली का कर्तव्य क्या होना चाहिए।

ई) निम्नलिखित प्रत्येक प्रश्न का मात्र एक वाक्य में उत्तर लिखिए। (कोई दो) (२)

१. कन्हैयालाल मिश्र 'प्रभाकर' जी के निबंध संग्रहों के नाम लिखिए।
२. हिंदी के कुछ आलोचकों द्वारा महादेवी वर्मा को दी गई उपाधि?
३. आशारानी व्होरा जी के लेखन कार्य का प्रमुख उद्देश्य क्या है?
४. 'कोखजाया' कहानी के अनुवादक का नाम क्या है?

कृति २) अ) निम्नलिखित पद्यांश पढ़कर सूचना के अनुसार कृतियाँ पूर्ण कीजिए : (६)

तेरी गति मिति तू ही जाणै क्या को आखि चखाणे
तू आपे गुपता, आपे प्रगट, आपे सब रंग भाणे
साधक सिद्ध, गुरु बहु चले खोजत फिरहि फरमाणे
समहि बहु पाइ इह भिक्षा तेरे दर्शन कउ कुरवाणे
उसी की प्रभु खेल रचाया, गुरुमुख सोभी होई।
नानक सब जुग आपे वरते, दूजा और न कोई ॥ ४ ॥

गगन में काल रविचंद्र दीपक बने।

तारका मंडल जनक मोती।

धूप मलयानिल, पवनु चँवरो करे,

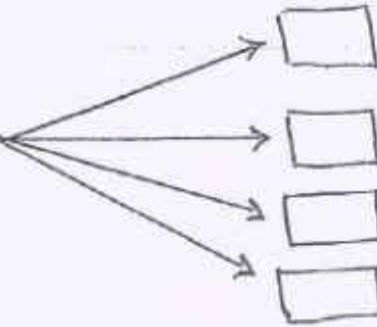
सकल वनराइ कुलंत जोति।

कैसी आरती होई भव खंडना, तोरि आरती।

अनाहत शब्द बाजत भेरी ॥ ५ ॥

१) कृति पूर्ण कीजिए :

आरती के लिए सजा धाल



२) उचित मिलान कीजिए :

- | | |
|----------|----------|
| १) ईश्वर | अ) काल |
| २) आकाश | आ) प्रभु |
| ३) समय | इ) खोजत |
| ४) खोज | ई) गगन |

३) 'विद्यार्थी जीवन में गुरु का महत्त्व' इस विषय पर अपने विचार ४० से ५० शब्दों में लिखिए : (२)

आ) निम्नलिखित पठित पद्यांश पढ़कर दी गई सूचनाओं के अनुसार कृतियाँ कीजिए : (६)

आइल बसंत के फूल रे, सुनु रे सखिया ।

सरसों सरसाइल

अलसी अलसाइल

घरती हरसाइल

कली-कली मुसुकाइल बन के फूल रे, सुनु रे सखिया ॥

आइल...

खेत बन रंग गइल

तन मन रंग गइल

अइसन मन भइल

जइसे इंद्रधनुष के फूल रे, सुनु रे सखिया ॥

आइल...

अंखिया कजराइल

सपना मुसुकाइल

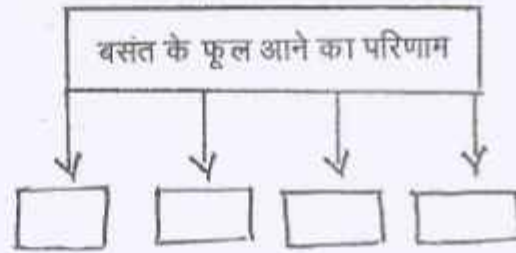
कंठ राग भराइल

बगिया फूलल यौवन फूल रे, सुनु रे सखिया ॥

आइल...

१. आकृति पूर्ण कीजिए :

(२)



२. समानार्थी शब्द लिखिए :

(२)

१. बगिया

२. फूल

३. स्वप्न

४. अंखियाँ

३. 'बसंत ऋतु की प्राकृतिक सुंदरता' का वर्णन अपने शब्दों में कीजिए ।

(२)

इ) निम्नलिखित मुद्दों के आधार पर 'नवनिर्माण' कविता का रसस्वादन कीजिए :

(६)

१. रचनाकार का नाम :

(१)

२. पसंद की पंक्तियाँ :

(१)

३. पसंद आने का कारण :

(२)

४. कविता का केन्द्रीय भाव :

(२)

अथवा

'आँसुओं को पोंछकर अपनी क्षमताओं को पहचानना ही जीवन है', इस सच्चाई को समझाते हुए 'सच हम नहीं, सच तुम नहीं' कविता का रसस्वादन कीजिए ।

ई) निम्नलिखित प्रत्येक प्रश्न का केवल एक वाक्य में उत्तर लिखिए : (कोई दो) (२)

१. गुरु नानक जी की रचनाओं के नाम लिखिए।
२. नयी कविता का परिचय लिखिए।
३. लोकगीतों के दो प्रकार कौन से हैं ?
४. गजल कौन सी भाषा का लोकप्रिय काव्य प्रकार है ?

कृति ३) अ) निम्नलिखित काव्य पंक्तियों को पढ़कर सूचना के अनुसार कृतियाँ पूर्ण कीजिए : (६)

मान लो कि
क्षण भर को
मैं यह स्वीकार लूँ
कि
पाप-पुण्य, धर्मोपार्जन, न्याय-दंड
क्षमा-शीलवाला यह तुम्हारा युद्ध सत्य है-

तो भी मैं क्या करूँ कनु,
मैं तो बही हूँ
तुम्हारी बावरी मित्र
जिसे सदा उतना ही ज्ञान मिला
जितना तुमने उसे दिया

जितना तुमने मुझे दिया है अभी तक
उसे पूरा समेटकर भी
आस-पास जाने कितना है तुम्हारे इतिहास का
जिसका कुछ अर्थ मुझे समझ नहीं आता है।

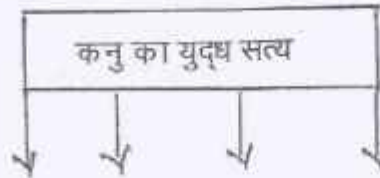
अपनी जमुना में
जहाँ घंटों अपने को निहारा करती थी मैं
वहाँ अब शस्त्रों से लदी हुई
अगणित नौकाओं की पंक्ति रोज-रोज कहीं जाती है ?
घारा में बह-बहकर आते हुए टूटे स्थ
जर्जर पताकाएँ किसकी हैं ?

हारी हुई सेनाएँ, जीती हुई सेनाएँ
नम्र को कंपाते हुए युद्ध घोष, क्रंदन-स्वर,
भागे हुए सेनिकों से सुनी हुई

अकल्पनीय अमानुषिक घटनाएँ युद्ध की
क्या ये सब सार्थक हैं ?

१) कृति पूर्ण कीजिए :

(२)



२) पद्यांश से शब्दयुग्म ढूँढकर लिखिए :

(२)

१..... २..... ३..... ४.....

३) 'दम तोड़ रही है जीवनदायी जीवनदायिनी नदियाँ' इस विषय पर अपना मंतव्य लिखिए : (२)

आ) निम्नलिखित प्रश्नों में से किसी एक का उत्तर लगभग ८० से १०० शब्दों में लिखिए : (४)

१. कनुप्रिया की दृष्टि से जीवन की सार्थकता स्पष्ट कीजिए।
२. कवि ने कनुप्रिया के माध्यम से आधुनिक मानव की व्यथा को शब्दबद्ध किया है, इस कथन को स्पष्ट कीजिए।

कृति ४) अ) निम्नलिखित प्रश्न का उत्तर लगभग १०० से १२० शब्दों में लिखिए :

(६)

१) "लालच का फल बुरा होता है", इस उक्ति का विचार पल्लवन कीजिए।

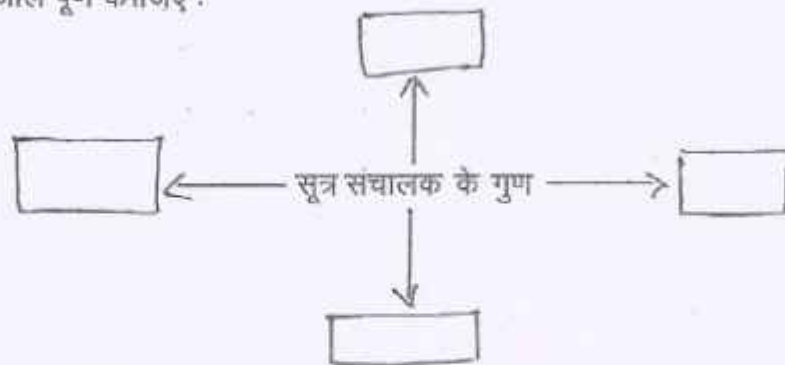
अथवा

अच्छे मंच संचालक के लिए आवश्यक है - अच्छी तैयारी। वर्तमान समय में संगीत संध्या, बर्थ डे पार्टी या अन्य मंचीय कार्यक्रमों के लिए मंच संचालन आवश्यक हो गया है। मैंने भी इस तरह के अनेक कार्यक्रमों के लिए सूत्र संचालन किया है। जिस तरह का कार्यक्रम हो, तैयारी भी उसी के अनुसार करनी होती है। मैं भी सर्वप्रथम यह देखता हूँ कि कार्यक्रम का स्वरूप क्या है? सामाजिक,

शैक्षिक, राजनीतिक, कवि सम्मेलन, मुशायरा या सांस्कृतिक कार्यक्रम! फिर उसी रूप में मैं कार्यक्रम का संहिता लेखन करता हूँ। इसके लिए कड़ी साधना व सतत प्रयास आवश्यक है। कार्यक्रम की सफलता सूत्र संचालक के हाथ में होती है। वह दो व्यक्तियों, दो घटनाओं के बीच कड़ी जोड़ने का काम करता है। इसलिए संचालक को चाहिए कि वह संचालन के लिए आवश्यक तत्वों का अध्ययन करे। सूत्र संचालक के लिए कुछ महत्त्वपूर्ण गुणों का होना आवश्यक है। हैसमुख, हाजिरजवाबी, विविध विषयों का ज्ञाता होने के साथ-साथ उसका भाषा पर प्रभुत्व होना आवश्यक है। कभी-कभी किसी कार्यक्रम में ऐन वक्त पर परिवर्तन होने की संभावना रहती है। यहाँ सूत्र संचालक के भाषा प्रभुत्व की परीक्षा होती है। पूर्व निर्धारित अतिथियों का न आना, यदि आ भी जाए तो उनकी दिनभर की कार्य व्यस्तता का विचार करते हुए कार्यक्रम पत्रिका में संशोधन/सुधार करना पड़ता है। आवोजकों की ओर से अचानक मिली सूचना के अनुसार संहिता में परिवर्तन कर संचालन करते हुए कार्यक्रम को सफल बनाना ही सूत्र संचालक की विशेषता होती है।

१) संजाल पूर्ण कीजिए :

(२)



२) निम्न शब्दों के प्रत्यय और मूल शब्द अलग कीजिए :

(२)

१. शैक्षिक

२. सफलता

३. आवश्यकता

४. निर्धारित

३) 'अतिथि देवो भव', इस विषय पर अपने विचार लिखिए।

(२)

- आ) निम्नलिखित प्रश्न में से किसी एक का उत्तर ८० से १०० शब्दों में लिखिए : (४)
१. 'फीचर लेखन' करते समय बरती जानेवाली सावधानियों पर प्रकाश डालिए।
 २. अपने शहर की विशेषताओं पर ब्लॉग लेखन कीजिए।

अथवा

सही विकल्प चुनकर फिर से लिखिए। (४)

१. पल्लवन का अर्थ है
 १. संक्षेपन
 २. निबंध
 ३. विस्तार
 ४. सूक्ति
२. चित्र, कार्टून अथवा फोटो का उपयोग करने से फीचर लेखन बनता है
 १. क्लिष्ट
 २. परिणामकारक
 ३. नाटकीय
 ४. गंभीर
३. मंचीय आयोजन में मंच पर आनेवाला पहला व्यक्ति
 १. अतिथि
 २. दर्शक
 ३. संचालक
 ४. अध्यक्ष
४. अपना मत व्यक्त करने का एक डिजिटल माध्यम है
 १. फीचर लेखन
 २. पल्लवन
 ३. ब्लॉग लेखन
 ४. अखबार

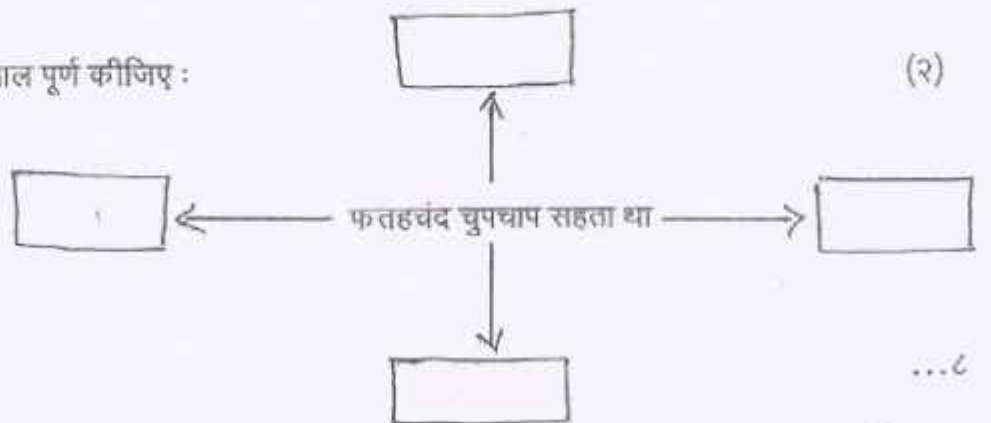
- इ) निम्नलिखित अपठित गद्यांश पढ़कर कृतियों पूर्ण कीजिए : (६)

साहब सन्नाटे में आ गए। फतहचंद को तरफ डर और क्रोध की दृष्टि से देखकर कांप उठे! फतहचंद के चेहरे पर पक्का इरादा झलक रहा था। साहब समझ गए, यह मनुष्य इस समय मरने-मरने के लिए तैयार होकर आया है। ताकत में फतहचंद उनके पासंग भी नहीं था। लेकिन यह निश्चय था कि वह ईंट का जवाब पत्थर से नहीं, बल्कि लोहे से देने को तैयार है। यदि वह फतहचंद को बुरा-भला कहते हैं, तो क्या आश्चर्य है कि वह डंडा लेकर पिल पड़े। हाथापाई करने में यद्यपि उन्हें जीतने में जरा भी संदेह नहीं था; लेकिन बैठे-बिठाए डंडे खाना भी तो कोई बुद्धिमानी नहीं है। कुत्ते को आप डंडे से मारिए, ठुकराए, जो चाहे कीजिए, मगर उसी समय तक, जब तक वह गुर्राता नहीं। एक बार गुर्राकर दीड़ पड़े, तो फिर देखें, आपकी हिम्मत कहाँ जाती है? यही हाल उस वक़्त साहब बहादुर का था। जब तक यकीन था कि फतहचंद पुड़की, घुरकी, हंटर, ठोकर सब कुछ खामोशी से सह लेगा, तब तक आप शेर थे; अब वह ल्योरियाँ बदले, डंडा संभाले, बिल्ली की

तरह घात लगाए खड़ा है। जवान से कोई कड़ा शब्द निकला और उसने डंडा चलाया। वह अधिक-से-अधिक उसे बर्खास्त कर सकते हैं। अगर मारते हैं, तो मार खाने का भी डर। उसपर फौजदारी में मुकदमा दायर हो जाने का अंदेश-माना कि वह अपने प्रभाव और ताकत से अंत में फतहचंद को जेल में डलवा देंगे; परंतु परेशानी और बदनामी से किसी तरह न बच सकते थे। एक बुद्धिमान और दूरदेश आदमी की तरह उन्होंने यह कहा - 'ओहो, हम समझ गया, आप हमसे नाराज हैं। हमने क्या आपको कुछ कहा है? आप क्यों हमसे नाराज हैं?'

फतहचंद ने तनकर कहा - 'तुमने अभी आधा घंटा पहले मेरे कान पकड़े थे और मुझे सैकड़ों ऊलजलूल बातें कही थीं। क्या इतनी जल्दी भूल गए?'

१) संजाल पूर्ण कीजिए :



- २) लिंग परिवर्तन कीजिए : (२)
१. शेर
 २. नौकर
 ३. आदमी
 ४. साहब

- ३) 'ईट का जवाब पत्थर से' इस मुहावरे का चरितार्थ करता हुआ कोई प्रसंग लिखिए। (२)

- ई) निम्नलिखित में से किन्हीं चार पारिभाषिक शब्दों के लिए हिंदी शब्द लिखिए : (४)

- | | |
|-----------------|--------------------|
| १. Annauncer | ५. Payment |
| २. Expert | ६. Record |
| ३. Registration | ७. Action |
| ४. Casual Leave | ८. Medical Benefit |

- कृति ५) अ) निम्नलिखित वाक्यों का कोष्ठक में दी गई सूचनाओं के अनुसार काल परिवर्तन कीजिए। (कोई दो) (२)

१. अपना इतिहास वही कहता है। (सामान्य भूतकाल)
२. मधुकरी तो अब भी खाते हैं। (अपूर्ण वर्तमानकाल)
३. मैं तुम्हारे मुँह से कुछ और सुनना चाहता हूँ। (सामान्य भविष्यकाल)
४. रात भर तूफान से लडा है। (अपूर्ण भूतकाल)

- आ) निम्नलिखित पंक्तियों में से उद्धृत अलंकारों के नाम पहचानकर लिखिए। (कोई दो) (२)

१. निर्मल तेरा जल अमृत के सम।
२. मैं तो राम विरह की मारी,
मोरी सुंदरी हो गई कंगना।
३. चरण कमल बंदों हरि पाई।
४. नैना देत बताय सब, हिय को हेत—अहेत।
जैसे निरमल आरसी, भली बुरी कहि देत ॥

- इ) निम्नलिखित पंक्तियों में से उद्धृत रस के नाम पहचानकर लिखिए। (कोई दो) (२)

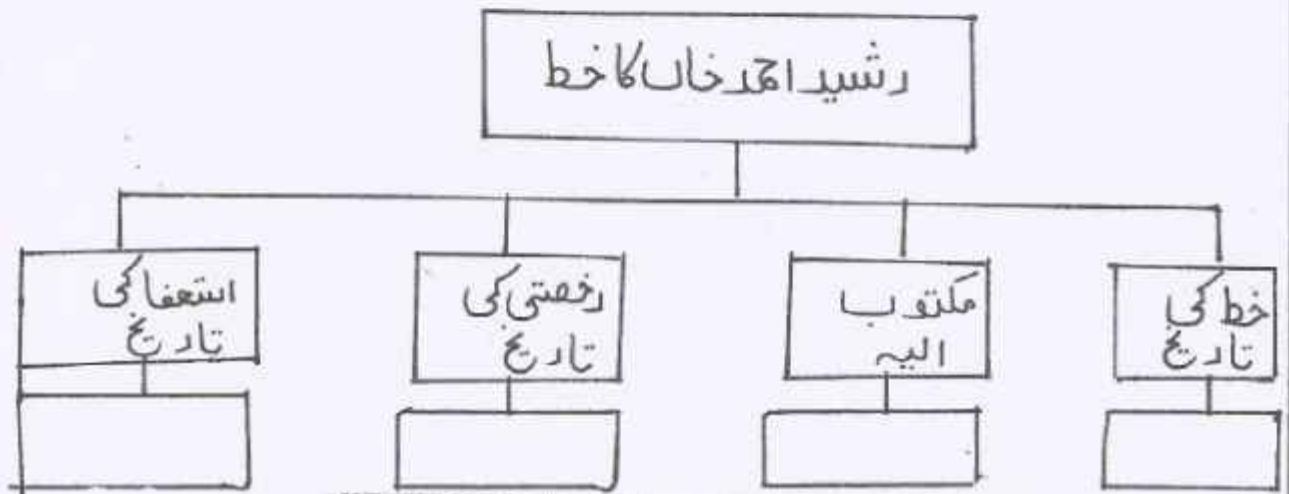
१. रुठे साजन से कहूँ, कैसे हिय की बात।
ऊँघत तारों के तले, कटती है हर रात ॥
२. नष्ट होने दो सखे ! संहार के सौ काम,
वेणु लो, गूँजे घरा, मेरे सलोने श्याम।
३. मन रे तन कागद का पुतला लागै दूँद बिनसि जाय
छिन में, गरब करै क्या इतना
४. जो पंथ भूल रुका नहीं,
जो हार देख झुका नहीं,
जिसके मरण को भी लिया हो जीत।

- ई) निम्नलिखित मुहावरों के अर्थ लिखकर उचित वाक्यों में प्रयोग कीजिए। (कोई दो) (२)
१. वाह-वाह करना।
 २. राह का रोडा बनना।
 ३. चल बसना।
 ४. हाहाकार मचना।

- उ) निम्नलिखित वाक्यों को शुद्ध करके वाक्य फिर से लिखिए। (कोई दो) (२)
१. संघर्ष से हटकर जिए तो क्या जीए।
 २. मिलना वही जो मोड दे मंजघार को।
 ३. मेरे ऊपर अन्याय हुआ है।
 ४. सत्य का पराजय पूरी तरह हो जाता है।
-

درج ذیل درستی اقتباس کا بغور مطالعہ کر کے دی ہدوئی سرگرمیاں مکمل کیجیے۔

(۱) شجری خاکہ مکمل کیجیے۔



(۱) یہ نام صدر اسلامیاہ ہائر سیکنڈری اسکول، شاہ جہاں پور

۲۹ اکتوبر ۱۹۶۳ء

جناب کرم!

مینجنگ کمیٹی نے میری رخصت بلا تخواہ، ۳۱ اکتوبر ۶۳ء تک کی منظور کی تھی۔ ساتھ ہی اس سے بھی مطلع کیا تھا کہ اب اس میں توسیع ممکن نہیں۔ یہ مدت قریب الختم ہے، میں نے آپ سے زبانی عرض کیا تھا کہ جس وقت بھی میرے گریڈ کے متعلق فیصلہ ہوا، میں اسکول کی ملازمت سے استعفا پیش کر دوں گا۔ یونیورسٹی نے اب سے چند ماہ پہلے میرے لیے ایک مناسب گریڈ منظور کر لیا تھا جس کی باضابطہ اطلاع مجھے اب ملی ہے اس لیے اصولاً اب مجھے مستعفی ہو جانا چاہیے۔

براہ کرم یکم نومبر ۶۳ء سے میرا استعفا منظور فرمایا جائے۔ اس کے ساتھ ساتھ اس کی بھی اجازت دی جائے کہ میں اپنے پراویٹنٹ فنڈ کی رقم بھی حاصل کر سکوں۔

جناب صدر! میں نے اسلامیاہ اسکول سے اپنی ادبی زندگی کا آغاز کیا بلکہ صحیح معنی میں اسی ماحول میں میرے شعور کی آنکھیں کھلیں۔ اچھے ماحول کے اثر سے، اچھے ساتھیوں کی ہمت افزائی سے اور اسکول کی چھوٹی سی لائبریری کے فیض سے، مطالعے کا شوق اور بڑھنا۔ لائبریری کی اچھی کتابوں نے مجھے تنقید و تحقیق کی طرف متوجہ کیا اور آٹھ برس کی نسبتاً طویل مدت اس کی نشوونما کے لیے بے حد سازگار ثابت ہوئی۔ لائبریری کی کتابوں نے، میرے بیشتر رفیقان کار کی ہمت افزائی نے اور ارباب اختیار کی خاموش سرپرستی نے مجھے اس قابل بنایا کہ میں اعلیٰ تحقیقی کاموں میں حصہ لینے کا اہل سمجھا جاؤں۔

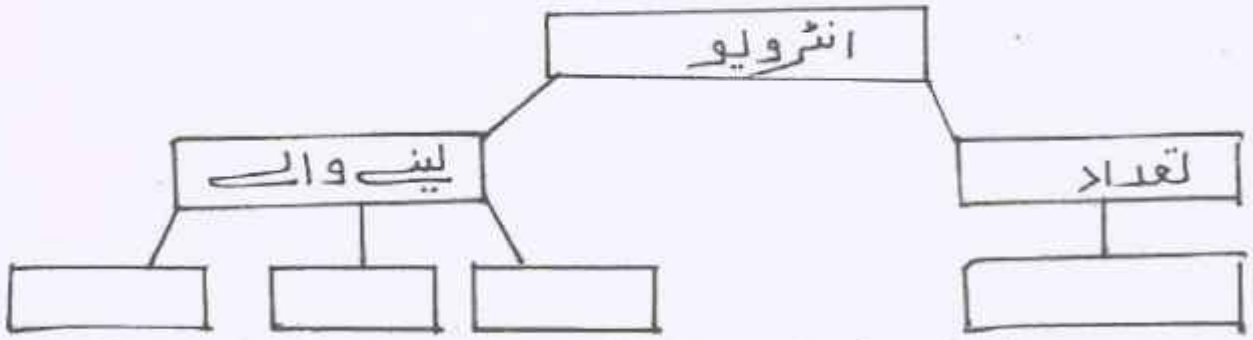
(۲) اقتباس کی مدد سے زیرِ اضافت والے الفاظ تلاش کر کے لکھیے

(۳) کتب بینی کے فوائد بیان کیجیے۔

(ب) درج ذیل درسی اقتباس کا بغور مطالعہ کر کے دی ہوئی سرگرمیاں

بد آیات کے مطابق مکمل کیجیے۔

(۱) سبق سے موزوں لفظ تلاش کر کے شبلی خاں کے مکمل کیجیے۔



ہمیں فقط لفظیں بننے کا شوق تھا۔ چنانچہ ہم نے فوج میں کمیشن کے لیے درخواست دے دی۔

ان دنوں ابھی وہ مصیبت نازل نہیں ہوئی تھی جسے آج کل سلیکشن بورڈ کہتے ہیں۔ انٹرویو تو خیر ان دنوں بھی ہوتے تھے، بلکہ ایک چھوڑ تین تین لیکن نہایت شریفانہ قسم کے۔ ایک بزرگ سباجرٹیل، کچھ نیم بزرگ سے بریگیڈیئر اور کرنل بیٹھے ہوتے تھے۔ سامنے کرسی پر امیدوار کو بٹھا دیا جاتا تھا اور پھر اس سے نہایت بے ضرر سے سوال پوچھے جاتے تھے:

آپ کا نام کیا ہے؟

تعلیم کہاں تک ہے؟

فوج میں کوئی رشتے دار ہے؟ وغیرہ وغیرہ۔

چنانچہ ہمارے دو انٹرویو جہلم اور پنڈی میں ہوئے اور ہم کامیاب رہے۔ آخری انٹرویو کے لیے حکم ملا کہ فلاں تاریخ کو شملہ حاضر ہو جاؤ۔ یہ سن کر ہماری خوشی کی انتہا نہ رہی۔

چنانچہ ہم ایک نیم لفظی کے عالم میں شملہ روانہ ہوئے اور جب انٹرویو ہو چکا تو شملہ سے گھر پہنچے اور لفظی کے حکم کا بے چینی سے انتظار کرنے لگے۔ ادھر چند عجلت پسند بزرگوں نے ہماری لفظی کے اعزاز میں پیشگی دعوتیں دینا شروع کر دیں جنہیں ہم واجبی بر خورداری مگر افسرانہ وقار کے ساتھ قبول کرتے رہے۔ آخر ایک دن ڈاکیا کھلا تار لے کر آیا اور دوری سے بولا، ”لفظی صاحب، لفظی مبارک ہو۔“

لیکن تار پڑھا تو فقط اتنا لکھا تھا: ”تمہیں او ٹی ایس مہو میں ٹریننگ کے لیے منتخب کیا گیا ہے۔ ۱۸ اگست ۱۹۴۰ء کو حاضر ہو

جاؤ۔“

(۲) اقتباس کی مدد سے کوئی دو انگریزی الفاظ لکھیے۔

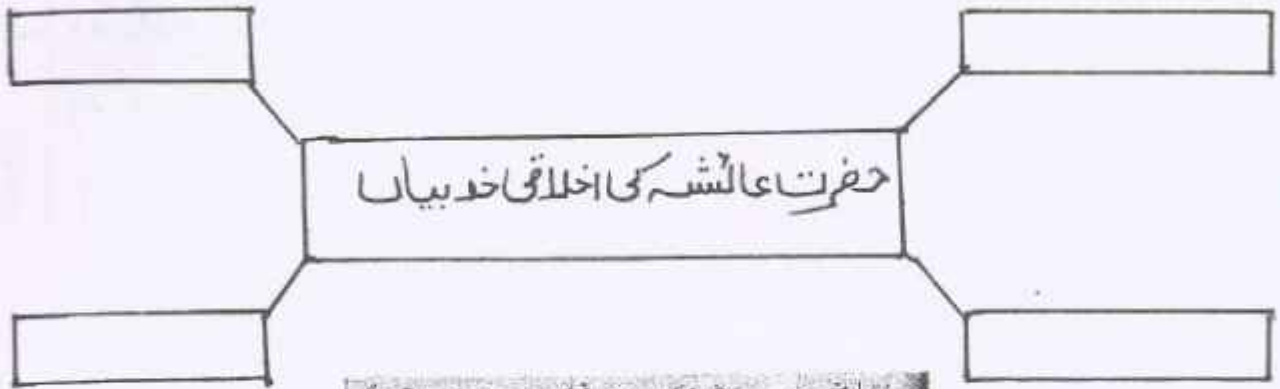
(۳) کسی مقصد کی تکمیل میں نظم و ضبط کی اہمیت پر اظہارِ خیال کیجیے۔

درج ذیل غیر درسی اقتباس کا بغور مطالعہ کر کے دی پدی سرگرمیاں

ہدایات کے مطابق مکمل کیجیے۔

شکلی خاکہ مکمل کیجیے۔

(1)



ام المومنین حضرت عائشہؓ نے یمن سے ہوائی تکت کا زمانہ اس ذات اقدس کی خدمت میں بسر کیا جو دنیا میں دکھلام اطلاق کی تکمیل کے لیے آئی تھی۔ چنانچہ حضرت عائشہؓ کا اخلاقی برجستہ نہایت بلند تھا۔ وہ نہایت سنجیدہ و فیاض، کوشش، عبادت گزار اور مہذب تھیں۔

حضرت عائشہؓ کی ذات میں قنوت اور شکر گزاری دونوں اہم تھیں۔ انہوں نے اپنی ازواج کی زندگی بڑی عسرت اور فقر وفاقہ سے بسر کی لیکن کبھی شکایت کا کوئی حرف ان پر نہ لایا۔ پیشا پیمانہ اس کی قنوت زبیر بن عوفی شان عبادت، تہذیب و انانیت ان میں سے کوئی چیز شوہر کے ہاں ان کو حاصل نہیں ہوئی۔ وہ دیکھتی تھیں کہ تو حات کا خزانہ سیلاب کی طرح ایک طرف سے آتا اور دوسری طرف سے نکل جاتا ہے، تاہم کبھی ان کی طلب ان کو دامن گیر نہ ہوئی۔ آنحضرت کی وفات کے بعد ایک دفعہ انہوں نے کھانا طلب کر کے فرمایا کہ میں کبھی میرے شوہر کو کھانا کھاتی کہ مجھے رونا نہ آتا ہو (یعنی جب میرے شوہر کو کھانا کھاتی ہوں تو مجھے رونا آتا ہے) ان کے ایک شاگرد نے پوچھا "وہ کیوں؟" فرمایا "مجھے وہ حالت یاد آتی ہے جس میں آنحضرت نے دنیا پر چھوڑ کر خدا کی قسم ادا میں دو دفعہ کبھی میرے شوہر کو کھانا کھایا تھا۔"

ہدایت کے مطابق ذخیرو الفاظ کی سرگرمیاں مکمل کیجیے۔

(2)

(i) لفظ "عسرت" کا ہم معنی لفظ درج ذیل متبادلات سے تلاش کر کے لکھیے۔

(ii)

(الف) خوشی (ب) مفلسی (ج) تکلیف (د) غم

(ii) لفظ "قناعت" کا ہم معنی لفظ درج ذیل متبادلات سے تلاش کر کے لکھیے۔

(iii)

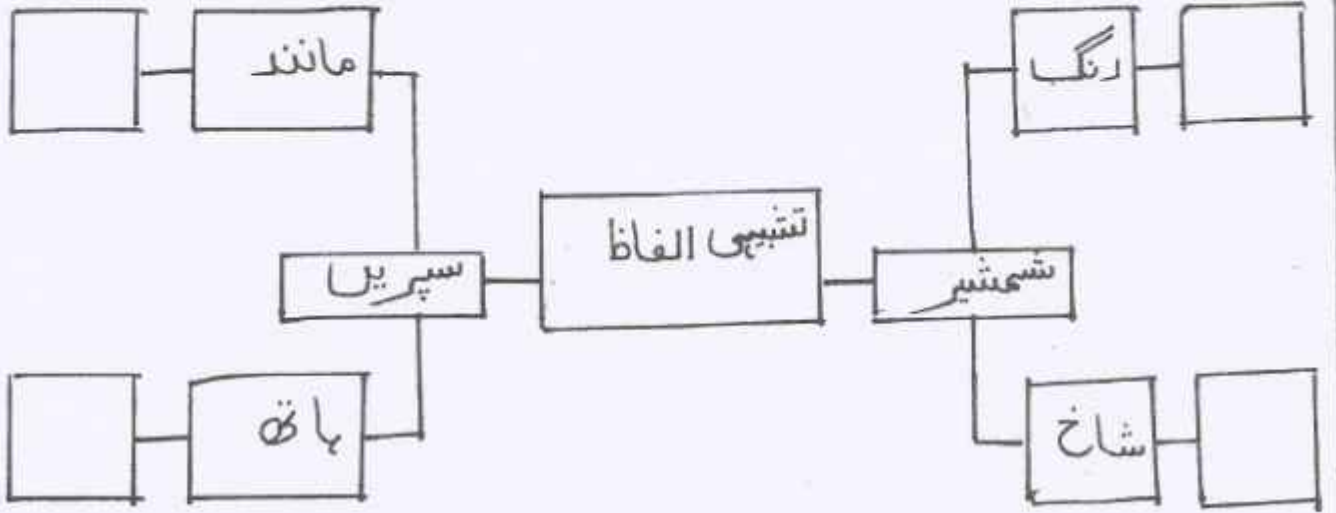
(الف) تھوڑی چیز پر ارضی ہونا (ب) بے صبر
(ج) تھوڑی چیز پر ارضی نہ ہونا (د) زیادہ کی خواہش کرنا

(3)

(۳) ہمیں اپنی زندگی صبر و شکر سے گزارنی چاہیے۔ اس بارے میں اپنی رائے بیان کیجیے۔

سوال ۲/ (نظم / غزل / قطععات)

الف درج ذیل ادسی نظم کے اقتباس کا بغور مطالعہ کر کے دی ہوئی سرگرمیاں ہدایات کے مطابق مکمل کیجیے۔



اس صف کے سرے پر جو چلی تیغ دو پیکر دم تیغ دو دم نے یا اس صف کے سرے پر
 پھر دوسری صف پر جو چلی واں سے پلٹ کر باقی کسی دشمن کے بدن پر نہ رہا سر
 کہ طارم اعلیٰ پہ ، گے فرق لعیناں پر
 کہ فرق زمیں ، گہ بہ سر گاؤ زمیں پر
 ششیر جو تھی رنگ میں الماس کی تمثال مرجان کی تھی شاخ کہ بس خوں سے ہوئی لال
 تیروں کے لعینوں کے تواتر پہ چلے بھال مانند زرہ تھیں سپریں ہاتھوں میں غربال
 تھی چشم زرہ پوش شجاعت کے جو یل میں
 اک دم میں گرفتار ہوئے دام اجل میں
 وہ تیغ بندی سے جو آتی سوئے پستی پستی میں جلا دیتی تھی وہ خرمن ہستی
 ہستی کی نہ باقی رہی نامردوں کو مستی مستی انھیں پر خواب اجل کی ہوئی پستی
 جس طرح سے گرتی تھی وہ انبوہ کے اوپر
 بجلی بھی تڑپ کر نہ گرے کوہ کے اوپر

(۲) درج ذیل فقر و لہجے کے لیے نظم کے اقتباس کی روشنی میں صحیح مفہوم تلاش کر کے لکھیے۔

دوسری صف میں تلوار کے چلنے کا اثر -----

- (ب) دشمن کے بدن پر سر باقی رہا (ب) لشکر باقی نہ رہا
(ج) کسی دشمن کے بدن پر سر باقی نہ رہا (د) کسی دشمن کا بدن باقی نہ رہا
(ii) جب تیغ اوپر سے نیچے آئی -----

- الف پستی میں خرمین ہستی جلا دیتی (ب) پستی میں انگلشن ہستی جلا دیتی
(ج) بلندی میں دامن ہستی جلا دیتی (د) پستی میں دامن ہستی جلا دیتی
(iii) مستی انھیں پر خوابِ اجل کی ہونٹی -----

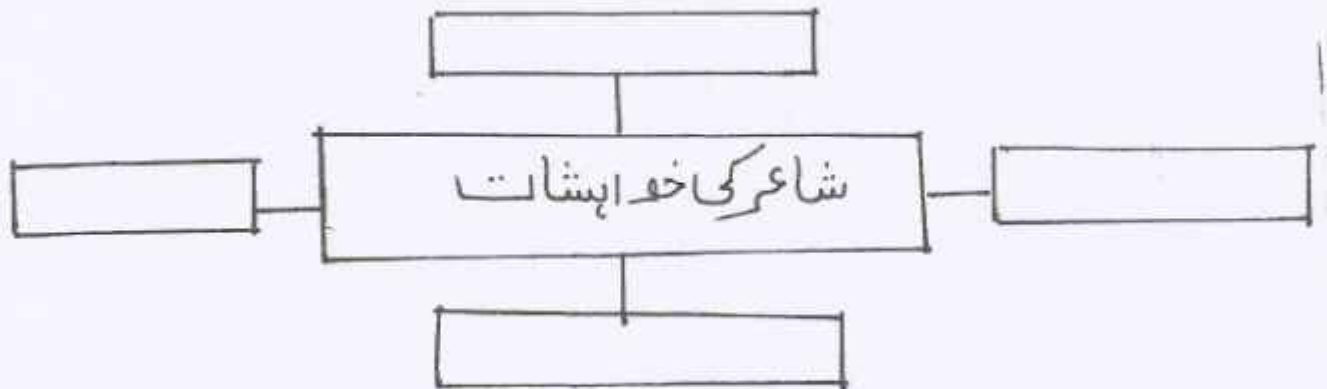
- الف پستی (ب) ہستی (ج) مستی (د) کشتی
(iv) بجلی بھی تڑپا کر نہ گریے -----

- الف ندی کے اوپر (ب) باڑھ کے اوپر
(ج) کوہ کے اوپر (د) مٹی کے اوپر
(v) درج ذیل شعر کی استحضانی وضاحت کیجیے۔

تھی چشم ز رہ پوش شجاعت کے جو پل میں
اک دم زمیں گرفتار ہوئے دامِ اجل میں

- (ب) درج ذیل درسی غزل کا بغور مطالعہ کر کے دی ہونٹی سرگرمیاں ہدایات
کے مطابق مکمل کیجیے۔

- (i) درج ذیل شبکی خاکہ مکمل کیجیے۔



سیم و گھر، نہ تاج و کمر چاہے ہمیں
 داد ہنر، بہ طرزِ دگر چاہے ہمیں
 ریشوں سے چور چور ہیں، سب کی بسیرتیں
 کس سے کہیں، شعور نظر چاہے ہمیں
 ہے درودانِ شوق کو یہ بائگین بہت
 چہرے پہ بس غبارِ سفر چاہے ہمیں
 اوروں سے مختلف ہے ہمارا معاملہ
 شوریدہ سر ہیں، دشت میں گھر چاہے ہمیں

تم شوق سے خلاؤں کی چٹائیں کرو
 اپنی زبناں پہ راہِ گزر چاہتے ہمیں
 یہ ذات کا طلسم، یہ بے منظری کی دھند
 یوں ہے کہ چشمِ خویش بگر چاہے ہمیں
 تیرا زنی تو شیوہِ اہلِ قلم نہیں
 ہیرے تراشنے کا ہنر چاہے ہمیں
 کیوں اے فضا چراغِ جلائیں چراغ سے
 خورشید اپنا، اپنی سحر چاہے ہمیں

(۱) درج ذیل سرگرمیاں ایک جملے میں مکمل کیجیے۔

شاعر جو نہیں چاہتا، اسے بیان کیجیے۔

چشمِ خویش بگر کا مطلب تحریر کیجیے۔

(۲) درج ذیل شعری استعسائی وضاحت کیجیے۔

کیوں اے فضا چراغِ جلائیں چراغ سے
 خورشید اپنا، اپنی سحر چاہیے ہمیں

(۳) درج ذیل شعری قطع کا بغور مطالعہ کر کے استعسائی ملام کی سرگرمیاں
 یہ آیات کے مطابق مکمل کیجیے

(۱) خالی جگہ پُر کیجیے۔

-----	آہ و نالہ	-----	ہم سخن
اندازِ کلام	-----	دلکش	-----

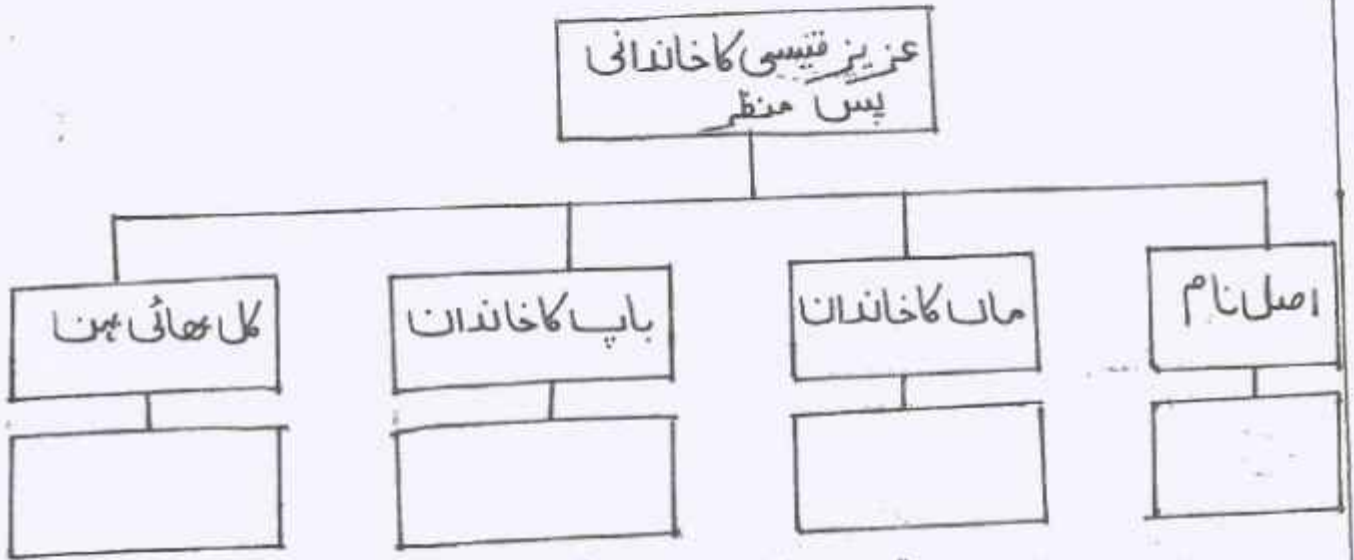
جانے کب بے درد اندازِ کلامِ درد مند
 ذوق، میرا ہم سخن اگر ہو کوئی دل خستہ ہو
 منہ سے جو لہکے وہ کچھ ہو، پر ہو دلکش ایک بات
 آہ و نالہ ہو کہ نالہ، مہرِ عجزِ جستہ ہو

درج ذیل شعر کی استحضانی وضاحت کیجیے

جانے کب بے درد اندازِ کلام دردمند
ذوق، میرا ہم سخن اگر ہو کوئی دل خستہ بند

سوال / ۳ اضافی مطالعہ

الف درج ذیل اضافی مطالعہ کے اقتباس کا بغور مطالعہ کر کے دی ہوئی سرگرمیاں ہدایات کے مطابق مکمل کیجیے۔
(۱) شعری خاکہ مکمل کیجیے۔



نام عزیز محمد خاں تھا۔ ماں سیدانی تھیں، باپ مفلس مگر فیور پشمان تھے۔ گھر سات بھائیوں اور ایک بہن سے بھرا پڑا تھا۔ لڑکپن غریبی میں بسر ہوا۔ ذہانت مادری اور پداری تھی۔ رگوں میں پشمانی خون تھا نہیں مارتا تھا۔ ہڈیاں افغانوں کی طرح چوڑی چمکی، گوشت کی چھانٹیں چوٹی سے ایزی تک ہاڑ پر دھری ہوئی تھیں، قد ایور بسٹ سے کم نہ تھا۔ رنگ میلے سونے کی طرح، چہرہ گول اور بڑا، مجال تناسب، جن میں ہنستہ وقت گڑھے پڑ جاتے تھے۔ سر کا پیالہ بالوں سے ڈھکا ہوا، گردن پہلوانی تھی، ماتھا چوڑا اور سلوٹوں سے پُر، ہال دست برد زمانہ سے محفوظ، گھنگھریالے اور تیل چاڈلے تھے۔ ناک اونچی اور نتھنے پھولے ہوئے، ناک پر کالے فریم کی موٹے موٹے شیشوں کی عینک دھری ہوئی، آنکھیں شیشوں کے پیچھے سے ذہانت کا اعلان کرتی ہوئیں، موٹے موٹے ہونٹ، ڈاڑھی موچھ کا نام و نشان نہیں۔ لہجے میں ٹھہراؤ، بھرے بھرے کندھے۔ اکثر پیٹتے اور کبھی کبھی پا جامہ پہنتے، گلے میں پوری آستین کا بٹن شرت یا کرتا ڈالے ہوتے اور بیروں میں سستے یا اوسط داموں کے چمپل۔ کسی دور میں شروانی بھی پہنا کرتے تھے جب آتش جواں تھا۔ واقعی ان کے جتنے پر شروانی کی پچھن دلوں میں لگن اور چھین پیدا کر دیتی ہوگی۔ چال درمیانہ اور وضع قلندرانہ تھی۔ عمر بھر قلم کا بل چلایا۔ گیت، غزلیں، نظمیں، کہانی، مکالمے، سنیرے لکھ کر کمایا۔ کمایا اتنا ہی کہ گھر کی سفیدی اور لباس کے اُبلے پن پر داغ دجے نہ دکھائی دیں۔ اردو کا یہی نصیب ہے، ہر کوئی نہ سا تر ہو سکتا ہے نہ ابنِ صفی اور نہ حفیظ جالندھری۔

درج اقتباس کی حمد سے "واف عطف" والے مرکب الفاظ تلاش کر کے لکھیے (۲)

عزیز قیسی کا حلیہ اپنے الفاظ میں بیان کیجیے۔ (۳)

(ب) درج ذیل میں سے کوئی دو سرگرمیاں ہدایات کے مطابق مکمل کیجیے۔

(۱) شہر حیدرآباد سے عزیز قیسی کو جو لگاؤ تھا اسے تحریر کیجیے۔

(۲) عصمت جاوید کے تعلق سے ان کی اہلیہ منور جہاں کے خیالات تحریر کیجیے۔

(۳) معنفہ نے منٹو کی زندگی کے آخری ایام کا جو نقشہ کھینچا ہے اسے لکھیے۔

(۴) منٹو، عصمت چغتائی اور اشوک کمار کا واقعہ بیان کیجیے۔

حصہ چہارم: قواعد

الف ہدایات کے مطابق سرگرمیاں مکمل کیجیے۔

(۱) درج ذیل محاوروں کا جملے میں استعمال کیجیے۔

(۲) جی ٹرا کرنا (ii) بھاتی پیٹنا

(۳) ہدایت کے مطابق سرگرمی مکمل کیجیے۔ (کوئی ایک)

(۱) شہزادے کو کسی انسان نے نہیں شہید کیا ہے۔

(مثبت جملے میں تالیف کیجیے)

(ii) ذیل کے جملے کے استفہام کو اقراء میں تبدیل کیجیے۔

”کیا تھیدہ اُسے اپنا توپینا نہ سمجھے گی؟“

(۳) درج ذیل جملوں کو ہدایت کے مطابق کیجیے۔ (کوئی ایک)

(۱) فرد سراج کی بنیادی اور مرکزی اکائی ہوتی ہے۔ (صرفی تجزیہ کیجیے)

(ii) گولیا وہی حرکتیں کرتا تھا جو لفٹینی کے منافی تھیں۔ (خودی تجزیہ کیجیے)

(۴) ذیل کے جملوں میں موجود لفظی مرکبات کو جدول کے مطابق تقسیم کیجیے۔

(۱) باقر مہدی نے نشست میں سمجھی دو ستوں کا خیر مقدم کیا۔

(ii) فرانس کا ٹور عجائب گھر بہت مشہور ہے۔

عربی + ہندی	عربی + عربی

(ب) ہدایات کے مطابق سرگرمیاں مکمل کیجیے۔

دل کو مرے ہر ایک طرح مٹھنا بنا

غم دے تو غم کے ساتھ کوئی غم گسار دے

(درج بالا شعر کی صنعت پہچان کر اس کی قسم بتائیے)

خرو بر میں جھاڑ دے دامن اگر تو فیض کا

قطرہ ڈرے بہا ہوں، لعل سنگ بے بہا

(درج ذیل بالا شعر سے لف و نشر سے ربط والے الفاظ کو آہٹے سے لکھیے)

(۲) درج ذیل اشعار میں سے کسی ایک شعر میں آنے والی تجنیس کا نام لکھیے۔

(۱) تیار تیغ و تبر و تیر ہوئی ہے

تدبیر گرفتاری شبیر ہوئی ہے

(۲) متاع جاں پہ مری چال چل رہا ہے کوئی

دیا ہے جس نے مجھے دل اسے دماغ ملا

(۳) درج ذیل اشعار میں سے کسی ایک شعر کی تقطیع کیجیے اور بحر کا نام لکھیے

محبت کا تری بندہ ہر ایک کو اے صنم پایا

برابر گردن شاہ و گدا و لقا کو خم پایا

وہ کرتا ہے باتیں، میں کرتا ہوں آپس

گہرا وہ ہے، شرابا میں ہوں

حصہ ۵ / اطلاقی تحریری سرگرمیاں

الف انٹرویو (ملاقات) فرض کیجیے کہ آپ کے شہر میں اردو کے مشہور شاعر کی آمد ہوئی ہے۔ آپ نے ان سے ملاقات کی۔ اس انٹرویو کے لیے کم از کم ۱۰ اس سوالات تیار کیجیے۔

(ب) کسی جم (Gym) سینٹر کا تعارف نامہ ترتیب دیجیے۔

(ج) آپ کے کالج میں منعقدہ "منشیات مخالف مہم" کی روداد قلم بند کیجیے۔

(د) جاپان میں زلزلے سے زبردست تباہی اور سونامی کا خطرہ اس پر فیچر تیار کیجیے۔

S.Y.J.C (Preliminary Exam)

Subject: Economics Marks: 80 Date :09-01-2024 (Duration 3.00 hrs)

Notes :-

- 1) All questions are compulsory
- 2) Draw neat table/diagrams
- 3) Figures to the right indicate full marks
- 4) Write answer to all main questions on new page

Q.1- (A) Complete the following statements.

- 1) Whole economy is studied in _____ (5)
 - a) Micro Economics
 - b) Macro Economics
 - c) Econometrics
 - d) Natural Sciences
- 2) The cost incurred by the firms to promote sales _____
 - a) Total Cost
 - b) Average cost
 - c) Marginal cost
 - d) Selling cost
- 3) When Marginal utility is negative total utility is _____
 - a) Rising
 - b) Not Changing
 - c) Falling
 - d) Zero
- 4) Demand for pen and Ink is _____
 - a) Comparatitive
 - b) Indirect
 - c) Complementary
 - d) Composite
- 5) Purchase of goods and services by one country from another country _____
 - a) Enterpot Trade
 - b) Import Trade
 - c) Export Trade
 - d) National Trade

B- Find the odd word out :

(5)

- 1) factors of production : Profit Labour, Capital, Entrepreneur.
- 2) Types of Bank Account, Recurring Account , Current Account, Saving Account , D-mat Account
- 3) Air, Water, Sunlight, Gold
- 4) Types of Simple Index Number :
Laaspepre's index number, Price Index Number, Quality Index Number, Value Index Number
- 5) Transfer Income : Pension, Unemployment allowance, wages, Gifts

C- Assertion and reasoning questions

(5)

- 1) **Assertion (A) :- Supply is a relative term.**

Reasoning (R) Supply is always expressed in relation to price, time and quantity

Options :-

- 1) (A) is true, but (R) is false
- 2) (A) is false, but (R) is true
- 3) Both (A) and (R) are true and (R) is correct explanation of (A)
- 4) Both (A) and (R) are True and (R) is not the correct explanation of (A) :-

- 2) **Assertion (A) :- Double counting leads to lower estimates of national income**

Reasoning (R) : Due to double counting, the value of a single commodity is calculated twice in the national income measurement.

1- Options : 1) (A) is True, but (R) is false

2) (A) is false but (R) is true

3) Both (a) and (R) are true and (R) is the correct explanation of (A)

- 3) **Assertion (A) : In perfect competition, Price is Determined by the forces of demand and supply.**

Reasoning (R) : The number of buyer and seller is so large that one person cannot influence prices.

Options :

(1) A is True, but(R) is false

(2) A is false, but (R) is True

3) Both (A) and (R) True and (R) is the correct explanation of (A)

4) Both (A) and (R) are True and (R) is not the correct explanation of (A)

- 4) **Assertion (A) :International trade leads to division of Labour and Specialisation.**

Reasoning (R) : India's national trade is not increasing.

Options :

1) (A) is True , But (R) is False

2) (A) is False, But (R) is True

3) Both (A) and (R) are True and (r) is not the correct explanation of (A)

4)) Both (A) and (R) are True and (R) is not the correct explanation of (A)

5) Assertion (A) : In monopoly use wise price can be discriminated Reasoning

Reasoning (R) : In India, the gas cylinder is priced the same for domestic and commercial use .

Option :-

- 1) (A) is true but (R) is false
- 2) (A) is false , but (R) is True
- 3) Both (A) and (R) are True and (R) is the correct explanation of (A)
- 4) Both (A) and (R) are True and (R) is not the correct explanation of (A)

D- Give an Economic term :-

(5)

- 1- The capacity of a commodity to satisfy human wants.
- 2- A Statistical tool to measure changes in an economic variable over a period of time.
- 3- Factor Payment received by land in the form of money.
- 4- Deposits withdrawable on demand.
- 5- The market where there are few sellers

Q.2- (A) Identify and explain the following concepts: (any three)

(6)

- 1- England imported cotton from India made readymade garments from it and sold them to Malaysia.
- 2- Ashok paid the tax on his income and property.
- 3- Fall in price of sugar by 50 % result in 50 % rise in demand
- 4- Anita receives monthly pension of Rs.15,000 from the state government
- 5- There are many firms producing soaps in India.

(B) Distinguish between (any three)

(6)

- 1- Microeconomics and Macroeconomics
- 2- Public finance and private finance
- 3- Perfect competition & Monopoly
- 4- Contraction in supply & Expansion in supply
- 5- Direct tax and Indirect tax

Q.3- Answer the following (any three)

(12)

- 1- Explain the functions of commercial banks
- 2- Explain features of oligopoly
- 3- Explain the concept of Total cost and Total Revenue
- 4- Explain the types of utility
- 5- Explain the outlay method of measuring elasticity of demand.

Q.4- State with reasons whether you agree or disagree with the following statements (any three)

- 1- The Law of diminishing marginal utility is based on many assumptions.
- 2- Money market plays an important role in India.
- 3- There are no theoretical difficulties in the measurement of national income
- 4- Gross National Product and Gross Domestic Product are same concepts
- 5- Obligatory function is the only function of the Government

Q.5- Study the following table, figure, passage and answer the questions given below it (any two)

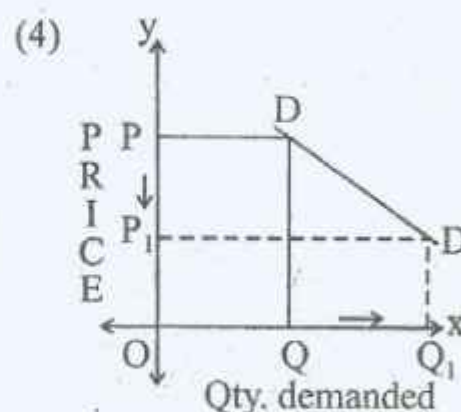
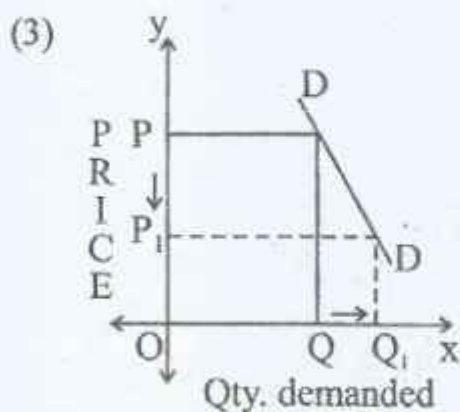
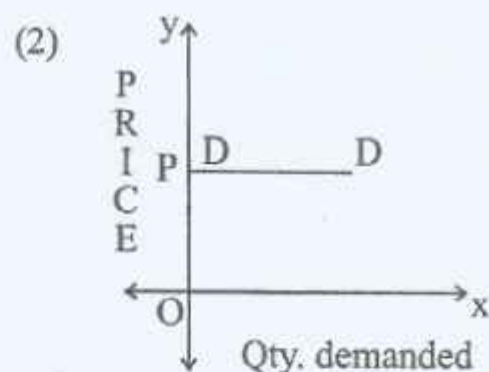
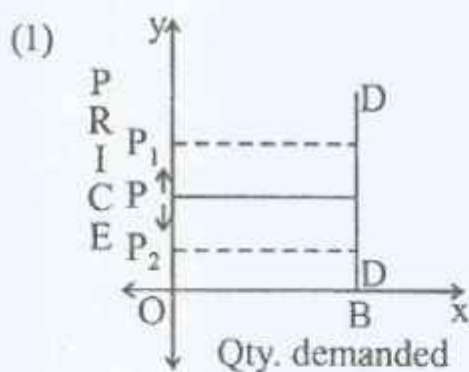
1- Observe the following table and answer the questions given below it :

Price in (Rs)	Individual Supply schedule
10	60
20	80
30	100

1- Define Individual supply

2) Draw individual supply curve with the help of the given individual supply schedule

2- Identify the price elasticity of demand from the following diagrams :



3) Read the given passage and answer the questions :

Mona visits a shopping mall near her residence . She shops for monthly groceries which include rice, wheat, suger, cooking oil and pulses. She purchases additional quantities of sugar much more than her monthly requirement anticipating that prices may rise in the coming days due to festivities.

She observes two different qualities of tur dal of which one quality is inferior and the other is superior. She does not purchase the low quality tur dal even though its price is comparatively lower . instead she prefers to buy superior quality tur dal.

Q.1- Identify the kind of good with reference to low quality tur dal (1)

Q.2) Identify the exception to the law of demand in the given passage with reference to purchase of additional quantities of suger much more than monthly requirement. (1)

Q.3) Express your personal opinion based on the above information (2)

Q.6- Answer the following questions in detail : (any two) (16)

- 1) Explain the concept of price elasticity of demand and its types.
- 2) Explain the practical difficulties in the estimation of national income
- 3) Explain the Law of demand and its exceptions

S.Y.J.C (Preliminary Exam) ABT

Subject: **Economics** Marks: **20** Date :09-01-2024 (Duration 1.00 hour)

Question -I Choose the correct option :-

(4)

1) Method adopted in Micro Economics analysis _____

- a) lumping method b) aggregative method c) Slicing method d) inclusive method

options:- 1) a,c,d 2) a,b,d 3) only c 4) only a

Ans : _____

2) Demand curve is parallel to X-axis in case of _____

- a) Perfectly elastic demand
b) Perfectly inelastic demand
c) Relatively elastic demand
d) Relatively inelastic demand

Options : 1) only a 2) only b 3) only c 4) only d

Ans : _____

3) Types of foreign trade are _____

- a) Import trade b) Export trade c) Entrepot trade d) Internal trade

Options :- a) a and b 2) a , b, and c 3) a, b, c and d 4) None of these

Ans : _____

4) Statement that highlight the significance of index numbers :-

- a) Index numbers are useful for making future predictions
b) Index numbers helps in the measurement of inflation
c) Index numbers helps to frame suitable politics
d) Index numbers can be misused

Options:- a) b, c & d 2) a, c, and d 3) a, b, and d 4) a, b and c

Ans : _____

Q.2- Find the odd word out:

(4)

1) Factors of Production : Profit , Labour , Land, capital.

Ans : _____

2) Features of monopoly: Price makers Entry barrier, Many sellers, Lack of Substitute.

Ans : _____

3) Theoretical difficulties while calculating National Income: Transfer Payment, Illegal Income, Unpaid services
Problem of Double counting.

Ans : _____

4) Non tax revenue sources: Fees, Gifts, Grants, Goods and Service tax (GST)

Ans : _____

Q.3- Complete the correction

(4)

1) Transportation of goods : utility ; Teachers teaching : _____

2) Land : Rent ; _____ ; wages

3) Total cost : $TFC + TVC$; Average cost : _____

4) Money market ; Short term funds ; _____ ; long term funds.

Q.4- Give Economics Term :

(4)

1) Two or more goods are demanded at a time to satisfy one want.

Ans : _____

2) The year for which Index number is being prepared.

Ans : _____

3) Import value is greater than export value.

Ans : _____

4) Market in which producers are price taker.

Ans : _____

Q.5- Study the following situation and express your opinion.

(4)

In India, RBI has the Sole right to issue currency notes the One rupee note and coins of all denomination issued by the ministry of finance of the government of India, but their distribution is undertaken by R Commercial bank is people's bank, the central bank is a banker to the government central bank performs differ function for the government.

Question :-

1) What types of currency issued by R.B.I.

Ans : _____

2) Give your opinion about R.B.I.

Ans : _____

2) Study the following situation and express your opinion

Foreign trade and economic growth are inter related when countries foreign trade is positive (Export - Import) it become as an engine of growth, Excess import of consumer goods badly affects the growth of industrial sector of the country .

1) What do you means by positive foreign trade ?

Ans : _____

2) Do you think import is beneficial to developing countries?

Ans : _____

Anjuman-i-Islam's
AKBAR PEERBHOY COLLEGE OF COMMERCE & ECONOMICS
M.S.Ali Road, Do Taaki, Grant Road (E), Mumbai-400 008.

S.Y.J.C (Preliminary Exam)

Subject: **Book Keeping & Accountancy** Marks: **80** Date :10-01-2024 (Duration 3.00 hrs)

Q.1- (A) Select the correct options and rewrite the sentences. (5)

- 1) A Statement showing financial position of the business is called as _____
a) Trail Balance b) Capital c) Balance sheet
- 2) The set of programme that directs the computer to perform desired task is _____
a) Software b) Programme c) Application
- 3) The closing balance of Receipts and payments account usually represents _____ balance
a) Surplus b) Deficit c) cash and bank
- 4) Death is a compulsory _____
a) Admission b) Retirement c) dissolution
- 5) The due date of the bill drawn for 2 month on 23rd November 2019 will be _____
a) 23rd Jan 2020 b) 25th Jan 2020 c) 26th Jan 2020

B- Write a word/term/phrase which can substitute each of the following statements (5)

- 1) Old Ratio less New ratio
- 2) Donation received for a specific purpose
- 3) The Shares on which dividend is not fixed
- 4) Account opened for revaluation of assets and Liabilities
- 5) Debit balance of Trading Account

C- Find out odd one (5)

- 1- Creditors, Land & Building, General Reserve , Capital
- 2- Surplus, Deficit, Net Profit, Capital Fund.
- 3) Wages, Salary, Royalty, Import duty.
- 4) Electricity bill, Trade bill, Inland bill, Foreign bill
- 5) Trading Account, Profit & Loss Account, Partner's Capital Account, Balance Sheet

D- Calculate the Following (5)

- 1- When depreciation is Rs.7500 and closing balance of Library books is Rs.92500 Calculate the opening balance of Library books
- 2) A, B, and C are partners sharing profits in proportion of $\frac{1}{2}$, $\frac{1}{3}$, and $\frac{1}{6}$. If Mr.A retires, what will be the new profit sharing ration?
- 3) 12 % p.a internet on Investment Rs.100,000 for 6 months. Calculate internet
- 4) If gross profit of Business is 30,000 and sales is Rs.120,000 calculate Gross Profit Ratio.

5) Veena who had accepted Sudhas bill for Rs.28,000 was declared bankrupt and only 50% could be recovered from her estate. Calculate the amount of bad debts.

Q.2- Vasu and Viraj Share Profit and Losses to the Ratio of 3:2 respectively their balance sheet as on 31st March 2019 was as under

Balance Sheet as on 31st March 2019

(10)

Liabilities	Amount	Assets	Amount
Sundry Creditors	45,000	Cash at Bank	750
General Reserve	30,000	Sundry debtors	66750
Capital :-		Stock	25,500
Vasu	1,08,000	Investment	36,000
Viraj	72,000	Plant	90,000
		Building	36,000
	2,55,000		2,55,000

They admit Hari into Partnership on 1-4-2019 the terms being that:

- 1) He Shall have to bring in Rs.60,000 as his Capital for 1/4th share in future profits
- 2) Value of Goodwill of the firm is to be fixed at the average profits for the last three years

The Profit were

2009-10	Rs. 48,000
2010-11	Rs. 81,000
2011-12	Rs. 73,500

Hari is unable to bring the value of the Goodwill in cash. It is decided to raise the goodwill in the books of accounts.

- 3) Reserve for Doubtful Debts is to be created at Rs. 1,500.
- 4) Closing stock is valued at Rs.22,500
- 5) Plant and Building is to be depreciated by 5%

Prepare Profit and Loss Adjustment A/c, Capital Accounts of Partners and Balance Sheet of the new firm.

OR

Kale, Gore and Pandhare were partners sharing Profit and Losses in the ration 3:3:2. Their Balance sheet as on 31st March 2018 is as follows

Liabilities	Amount	Assets	Amount
Capital Account		Building	10,000
Kale	11,000	Plant & Machinery	10,700
Gore	15,000	Live Stock	10,000
Pandhare	8,000	Debtors	5,000
Creditors	8,900	Stock	6,600
Bill Payable	2,000	Bank	6,600
Reserve Fund	4,000		
	48,900		48,900

On 1st April 2018 Mr. Pandhare retired from the firm on the following terms

1- Assets to be revalued as stock Rs.6300, Plant and Machinery Rs.10,000 Live Stock Rs.10,200

2- Goodwill of the firm is to be valued at Rs.4,000, however only Pandhare's share in it is to be raised in the books and written off immediately.

3- R.D.D to be maintained at 10% on debtors.

4- Rs.100 to be written off from creditors

5- The amount payable to Mr. Pandhare to be transferred to his loan account.

Prepare :- Profit and Loss adjustment account, Partners Capital Account , Balance Sheet of New Firm.

Q.3- Rajiv and Sanjeev are partners sharing profits and Losses equally. They decided to dissolve their firm on 31st March 2019. The Balance sheet of the firm on 31st March 2019 was as under. (10)

Liabilities	Amount	Assets	Amount
Reserve Fund	8,000	Building	20,000
Creditors	12,800	Furniture	6,000
Bills payable	7,200	Debtors	18,000
<u>Capital A/c's</u>		Stock	20,000
Rajeev	20,000	Bills Receivable	2000
Sanjeev	24,000	Cash	6,000
	72,000		72,000

The Assets realised as under:

Stock Rs.18,400, Debtors Rs.16,600, Bill Receivable Rs.1980. Sanjeev agreed to takeover the building for Rs.18,000 and Rajeev agreed to take over the furniture for Rs.5,400. The realisation expenses amounted to Rs.600

Pass the Journal Entries of the firms

OR

Amol draws a bill on Atul for Rs.24,000 on 6th Oct, 2019 for 3 months. Atul accepts the bill on the same date. Amol sends the bill to bank for collection on 20th Oct 2019. Before due date Atul finds himself unable to make the payment of bill and request Amol to renew it. Amol agrees to the proposal on condition that Atul should pay Rs.10,000 in cash along with interest Rs.800 and accept a new bill for 2 months for the balance. Atul retired the bill on 12th Jan 2020 by paying Rs.13500. Give journal entries in the books of Amol.

Q-4 Shradha Ltd. issued 100000 equity shares of Rs.10 each at a premium of Rs. 2 per share payable

Rs 3 on Application

Rs.5 on Allotment

Rs.4 on first & Final Call

Applications were received for Rs1,20,000 equity shares and Pro-rata allotment was made to all the applicants.

The excess application money was adjusted with allotment.

Vinita who was allotted 200 shares failed to pay first & Final Call and her shares were forfeited.

Pass Journal Entries in the books of Shradha Ltd.

OR

Explain the importance of computerized accounting system

(8)

Q-5 Rakesh, Mahesh and Mukesh were partners sharing profits and Losses in the ratio 3:2:1 respectively

Their balance sheet as on 31st March 2019 is as under

Balance sheet as on 31st March 2019

Liabilities	Amount	Assets	Amount
Capital A/c:		Plant & Machinery	40,000
Rakesh	30,000	Motor Truck	20,000
Mahesh	20,000	Debtors	16,000
Mukhesh	10,000	Less : R.D.D	<u>2,000</u>
Creditors	8,000	Investment	18,000
Bank Loan	20,000	Bank	14,000
Bills Payable	18,000		
	1,06,000		1,06,000

Mukesh died on 30th June 2019 and the following adjustments were made

1- Assets were revalued as :- Plant & Machinery Rs 44,000, Motor truck Rs.18,000, Investment Rs.17,000

2- All Debtors were good.

3- Goodwill of the firm valued at two times the average profits of the last five years. No Goodwill account to be shown in the books of the firm.

4- Mukesh's share of profit up to his death to be calculated on the basis of average profits of last two years.

5- Five years profits were I year Rs.6,000 II Year Rs. 11,000, III Year Rs.7,000, IV Year Rs.12,000, V Year Rs.24,000 respectively

Prepare : Profit and Loss Adjustment Account, Partners Capital Accounts, Balance Sheet on 1st July 2019

OR

Following is the balance Sheet of Param Company Ltd. as on 31st march 2019 and 31st March 2020

Liabilities	31-3-2019	31-3-2020	Assets	31-3-2019	31-3-2020
Share Capital	2,50,000	3,70,000	Fixed assets	2,80,000	4,40,000
Reserve and Surplus	60,000	1,00,000	Current assets	1,30,000	1,20,000
Current Liabilities	1,00,000	9 0,000			
	4,10,000	5,60,000		4,10,000	5,60,000

You are required to prepare comparative Balance Sheet of Param Company Ltd.as on 31st March,2019 and March 2020.

Q.6- From the following Receipts and Payment Account and Additional information prepare income Expenditure Account for the year ended 31st March 2019 and balance sheet as on that date.

Receipts and Payments Account for the year ended 31st March 2019

Liabilities	31-3-2020	Assets	31-3-2019
To Balance b/d	3,000	By Salaries	4,000
To Subscription	5,000	By Printing & Stationery	1,000
To Donations (Revenue)	5,000	By Commission	500
To Entrance fees	4,000	By Rent	2000
To Interest	1,000	By Electric Charges	1,500
		By Furniture	8,000
		By Balance c/d	1,000
	18,000		18,000

Additional Information

- 1) Outstanding Rent was Rs.200
- 2) Subscription includes Rs.1000 as subscription received in advance and subscription outstanding for current was Rs.500
- 3) Depreciation Furniture @ 8% p.a.
- 4) 50 % Entrance fees should be capitalized
- 5) Capital Fund was Rs.3,000

Q.7- Rucha and Juili are partners sharing Profit and Losses in their Capital Ratio. From the following Trail Balance and Adjustments you are required to prepare Final Accounts.

Trail Balance as on 31st March 2019

Particular	Debit	Particular	Credit
Purchases	48,000	Capital A/c	
Trade Expenses	3,000	Rucha	80,000
Salaries	4,500	Juili	40,000
Wages and Salaries	2,800	Sundry Creditors	22,000
Advertisement (2 Years)	4,000	Sales	1,48,000
Sales Returns	8,000	R.D.D	1,200
Freehold property	23,000	Bills Payable	12,000
Office Rent	5,000	Purchases Return	6,000
Motor Van	40,000		
Stock (1/4/2018)	89,500		
General Expenses	2,500		
Sundry Debtors	62,000		
Coal, Gas, Fuel	1,000		
Carriage Inward	800		
Carriage Outward	1,300		
Plant and Machinery	13,800		
	3,09,200		3,09,200

Adjustments:-

- 1- Closing Stock is valued at Rs.88,000 (Cost Price) and Rs.90,000 (Market Price)
- 2- Rucha and Juili withdrawn Goods from business Rs.3000 and Rs.2000 respectively for their Personal use.
- 3- Depreciate Motor Van by 5% and Plant and Machinery by 7 %
- 4- Reserve for Doubtful Debts on Debtors @ 5 % is to be created.
- 5- Outstanding Wages Rs.800
- 6- Goods of Rs.6000 were purchased on credit and credit sales Rs.6000 but no entry was found in the books of Account.

S.Y.J.C (Preliminary Exam) ABT

Subject: **Book-Keeping & Accountancy** Marks: **20** Date :10-01-2024 (Duration 1.00 ho

Q.1- A. State true or False with reason : (5)

1- Retirement of bill means payment of the bill before due date :

2- "Not for profit " concern have Profit motive.

Q.2- Select the correct option & rewrite the sentences. (5)

1- Death is a compulsory _____.

- a) dissolution b) admission c) retirement d) winding up

2- The set of programme that direct the computer to perform desired task is _____.

- a) Software b) Programme c) Application d) Hardware

3- If shares are issued at their face value it is called as issued at _____.

- a) Premium b) Discount c) Par d) None of these

4- The bill drawn on 12th June, 2023 at two months, would be payable on _____.

- a) 12th August 2023 b) 14th August 2023 c) 15th August 2023 d) 16th August 2023

5- Assets and Liabilities are transferred to realisation account at their _____ values.

- a) market b) Purchase c) sale d) book

Q.3- Calculate the following : (5)

1- Salary of Rs. 1,20,000 paid for 6 months in a year. Calculate outstanding salary.

2- Calculate 10 % p.a. Depreciation on furniture of Rs 2,00000 for three months.

3- A & B share profit & Losses in the ratio of 3:2 . They admitted P with 1/4th Share in future profit calculate new profit sharing ratio.

4- Calculate Gross Profit Ratio : Sales Rs. 9,00,000. Gross Profit ratio 20% on cost.

5- Undervaluation of closing stock by 10 % closing stock was Rs.90,000. find out the value of closing stock.

Q.5- Prepare a specimen of "Bill of Exchange". (5)

Mr. Akash sane 42, Sagar bandar Road, draws a three months bill on Mrs. Megha Kale, Vishram Sangli for Rs.16,500 on 1st December 2023 which was accepted on 4th December, 2023.

S.Y.J.C (Preliminary Exam)

Subject: **Organisation of Commerce & Mgt.** Marks: 80 Date :11-01-2024 (Duration 3.00 hr)

Q.1- (A) Select the correct option and rewrite the sentences:

1- _____ is the function which support to activate the plans with the help of employees. (5)

- a) Staffing b) Directing c) coordinating

2- Scalar chain means the hierarchy of _____ from the top level to the lower level for the purpose of communication

- a) discipline b) unity c) authority

3- Entrepreneur means to _____

- a) undertake b) enterprise c) businessman

4- In online shopping , customers put the product in the _____

- a) Shopping mall b) Shopping cart c) Shopping bag

5- _____ is celebrated as world consumers Day.

- a) 24th December b) 26th January c) 15th March

B- Match the correct pairs :

Group "A"	Group "B"
a) Scientific Management	1) Agro Tourism
b) Planning	2) Detail Programme
c) Outsourcing	3) F.W.Taylor
d) Business Ethics	4) Business Process outsourcing (PBO)
e) The Idea of bringing urban resident to agriculture farm	5) Branch of social Science
	6) Trade Mark
	7) ISI
	8) To Earn profit
	9) Henry Fayol
	10) Group Efforts

C- State whether the following statement are true or False

- 1- The Principles of Management are universal in natures.
2- Overdraft facility is available for savings bank accountholder
3- Dishonest advertisement can be appreciated by customers in the long run.
4- Lok Adalat can rightly be described as " people court"
5- Regulated market operates according to focus of demand and supply.

(5)

D- Correct the underlined word and rewrite the statement.

(5)

- 1) Staffing is concerned with machines
- 2) Decentralisation means Centralisation of power and authorities at a specific position
- 3) Whole life policy is taken for a specific period
- 4) National Commission entertains complaints where the value of the goods or services paid as consideration does not exceed Rs. 1 Crore
- 5) Branding is the process of classification of products according to similar characteristics and /or quality.

Q.2- Explain the following terms/concepts :(any four)

(8)

- 1- Lok Adalat
- 2- Social Responsibility
- 3- Controlling
- 4- Outsourcing
- 5- Debit Card
- 6- Product

Q.3- Study the following case/situation and express your opinion (any two)

(6)

1- Mr. Jagan is a salaried person He want to take policy for his two children which assures them protection as well as completes their financial needs ones they become major by age.

- 1) Suggest Mr. Jagan a policy which can satisfy requirements of his children.
- 2) Who are beneficiaries of policy?
- 3) In above case which insurance Principles is involved.

(2) Mr. X deals in import and export business so he needs differnet foreign currencies. for the expansion of his business, He borrow money from bank. He invest his funds in the equity shares.

- 1) Name the market from where Mr. X borrows money.
- 2) Name the market where Mr. X invest his funds
- 3) Which type of currency is required for international market ?

3) Mr. Hari is young M.Sc (Agri) degree holder. Mr. Sitaram is commerce graduate. Mr. Hari is willing to start Agro Tourism centre at his village . Mr Sitaram is willing to work as accountant in private company

- 1- Find out desires of Mr. Sitaram
- 2- What is desire of Mr. Hari
- 3- Which qualification is acquired by Mr. Sitaram ?

Q.4-Distinguish between the following (any three)

(12)

- 1- Planning and controlling
- 2- Rail Transport and Road Transport
- 3- Fire Insurance and Marine Insurance
- 4- State Commission and National Commission

Q.5- Answer in brief (any two)

(8)

- 1- Explain important of planning'
- 2- Explain characteristic of an entrepreneurs
- 3- Explain function of marketing in brief

Q.6- Justify the following statements (any two)

(8)

- 1- Principles of management are flexible in nature
- 2- it is easy to set up e-business
- 3- Online transaction is done with the help of the internet
- 4- Consumers have many responsibilities

Q.7- Attempt the following (any two)

(10)

- 1- Explain any five principles of modern management.
 - 2- What are the function of warehouses
 - 3- What are social responsibilities of commercial organisation towards consumers?
- Answer the following (any one)

Q.8-Define Bank Explain secondary functions of Commercial Bank.

(8)

Or

Explain the importance of marketing to the society and firm.

Anjuman-i-Islam's
AKBAR PEERBHOY COLLEGE OF COMMERCE & ECONOMICS
M.S.Ali Road, Do Taaki, Grant Road (E), Mumbai-400 008.

S.Y.J.C (Preliminary Exam) ABT-2024

Subject: Organisation of Commerce & Mgt. Marks: 20 Date :11-01-2024 (Duration 1.00 hrs)

Q.1- Correct the underlined word and rewrite the following sentences.

(4)

- 1- The Principles of Management are rigid in nature
- 2- Planning is last function of management
- 3- Road Transport is an expensive mode of transport
- 4- Supplier is a king of the market

Q.2- Complete the sentences

(4)

- 1- Giving of distinct name to one's product is called as _____
- 2- _____ is the apex financial institution in branding industry in the country
- 3- The tasks of getting the things done by others is known as _____
- 4- _____ is a function of company the actual performance with standard performance

Q.3- Find the odd one

(3)

- 1- Price, People, Promotion, Product
- 2- NABARD, RBI, SIDBI, EXIM
- 3- District Judge, High Court Judge, Commissioner, Supreme Court Judge

Q.4- Study the following case/ Situation and express your opinion (any three)

(9)

1- Mr. A purchases goods from nearest shop. Mr.B purchases mobiles from Japan.Mr. C of Pune purchases electronic goods from Delhi.

(a) From which type of market does Mr. A purchase?

Ans. _____

(b) Name the type of market from where Mr. B deals.

Ans. _____

c) State the type of market from where Mr. C purchases goods.

Ans. _____

2- Mr. Ansh made his payment by cheque, while Mr. Vansh made his payment by fund transfer.

a) Whose payment is faster?

Ans. _____

b) Whose payment is related to traditional business?

Ans. _____

c) Whose payment is related to e-business?

Ans. _____

3- Mr. Raj is a businessman. He has his own factories in Pune and Nashik. He lives in Pune with his wife and two daughters aged 5 and 8 years.

a) Can Mr. Raj take a life insurance policy for his wife and two children?

Ans. _____

b) Can Mr. Raj take a marine insurance policy for his factories?

Ans. _____

c) Which type of insurance should Mr. Raj take for protecting his factories from loss due to fire?

Ans. _____

4- Saroj Sweets is a renowned name for quality sweets since 1935. Harshada the owner has decided to increase business by opening the new branch in another area. For this, she has appointed Mr. Pratap to take care of all the resources required in terms of Men, Materials and Money. Mr. Pratap in turn has appointed Mr. Rakesh to look after employees selection and recruitment.

a- Who is responsible for planning function?

Ans. _____

b- Who is responsible for organizing various resources?

Ans. _____

c- Who is responsible for staffing?

Ans. _____